

The Version of Record of this manuscript has been published and is available in
Forest Science, Volume 59, Number 2, 2013, pp. 211-222.

Published: 01 April 2013 DOI: <http://dx.doi.org/10.5849/forsci.11-078>

Explaining the Shifts of International Trade in Pulp and Paper Industry

Maija Hujala^{a*}, Heli Arminen^a, R. Carter Hill^b, Kaisu Puumalainen^a

^aSchool of Business, Lappeenranta University of Technology, P.O. Box 20, FIN-53851, Lappeenranta, Finland

^bLouisiana State University, Economics Department, 2317 Business Education Complex, Baton Rouge, LA 70803

*Corresponding author

E-mail address: maija.hujala@lut.fi (M. Hujala)

Abstract

The pulp and paper industry is currently facing broad structural changes due to global shifts in demand and supply. These changes have significant impacts on national economies worldwide. In this paper, we describe the recent trends in the pulp and recovered paper (RP) production, and estimate augmented gravity models of bilateral trade for chemical pulp and RP exports with panel data. According to our results, there is some variation in the effects of the traditional gravity-model variables between pulp grades and RP. The results imply also that, in comparison to export supply, import demand plays a larger role in determining the volume of exports. Finally, it is evident that Asia, particularly China, is the most important driver of chemical pulp and RP trade: China is hungry for fiber, and must import to satisfy its growing needs. Moreover, the speed of China's growth in chemical pulp and RP imports has been driving the increased significance of planted forests in the exports of hardwood pulp (BHKP) as well.

Keywords: Pulp and paper industry; bilateral trade; gravity model of international trade; panel data; Hausman-Taylor estimator

JEL Classifications: C23, F11, Q23, Q27

Introduction

The input and output markets of the pulp and paper industry (P&PI) are experiencing dramatic structural changes (e.g. McCarthy and Lei 2010, Toppinen and Kuuluvainen 2010, Hetemäki 2005 p. 97). These shifts include, among others, the substitution of printed media for electronic communication technologies, the shift in advertising expenditures from print media to electronic media, the liberalization of trade with formerly closed low-income economies such as China, and the increased importance of planted forests and recovered paper as a raw material for paper production. Until the late 1980s, the global pulp production was centered in the northern hemisphere, especially in North America and Northern Europe. More recently, due to innovations in clonal forestry and pulp and paper processes, also the eucalyptus tree has become an important raw material in paper production (Figueiredo 2010). At the present, eucalyptus pulp is in great demand as a raw material especially for fine papers. During the past decade, Latin America (particularly Brazil) with its enormous eucalyptus plantations has become one of the most important hardwood pulp producers although its domestic demand for pulp is low in comparison to, for example, North America and Western Europe.

Together with the global shifts in pulp markets, the focal point of paper and paperboard manufacturing has moved closer to rapidly growing markets in Asia, particularly in China. In the traditional paper production areas, i.e. North America and Western Europe, paper demand is stagnating or even decreasing, depending on the paper grade, and as a consequence the number of pulp and paper machines and mills has declined dramatically in the recent years. Also, increasing demand for paper and paperboard as well as growing environmental awareness have boosted the use of recovered paper (hereafter RP) as a raw material in paper production during the past decades.

According to the United Nation's Food and Agriculture Organization's ForesSTAT database (FAO 2011a), the use of recovered fiber exceeds nowadays the use of virgin fiber as a raw material.

All the changes in input and output markets have affected the trade of raw materials for paper and paperboard via changes in their import demand and export supply [1]. A tool frequently used to evaluate export and import flows is the gravity model of international trade. The model has been used also in the context of forest products trade (e.g. Kangas and Niskanen 2003, Polyakov and Teeter 2007, Zhang and Li 2009) but only for limited geographic areas and/or with cross-sectional data. Despite the significant impacts that the dynamic changes in P&PI have on national economies worldwide, the subject has hardly been studied by using global data and advanced panel data estimation methods. Our aim is to fill this gap.

The objective of this paper is to model bilateral trade patterns of chemical pulp and RP. We first describe the recent trends in global wood pulp and RP markets and then empirically examine bilateral trade flows of bleached kraft pulp and RP. We draw from the theories of the gravity model and international trade, and estimate an extended gravity model with measures of import demand and export supply as explanatory variables. Analyses are done using the generalized instrumental variable estimator of Hausman and Taylor (1981) with panel data between 1990 and 2008.

Global Paper and Pulp Markets

Since 1970, the total consumption of paper and paperboard has tripled and was over 377 million tonnes in 2009 (FAO 2011a). However, there are massive differences between regions in the pace of demand growth and the phase of the industry life cycle. As shown in Figure 1, Europe and North

America dominated paper and paperboard production and consumption until the 1990s. In North America, the markets matured in the early 1990s and consumption, as well as production, has mainly decreased since 2000. In Europe, consumption and production reached the maximum in 2007 and started to decline after that. One reason for the decrease in North American and Western European paper markets is the substitution effect of electronic media (see for example Hetemäki 2005, Hujala 2011). Respectively, one of the most significant causes for the stagnating demand for paperboard in developed countries is the globalization of manufacturing industries (Diesen 2007 p. 38). In other words, as manufacturing industries have moved parts of their production from industrialized countries to, for example, China, the need for packaging paper and paperboard has declined in Western markets.

In Asia, the demand for paper has been boosted by economic growth since the early 1980s and the region contributes nowadays over 40 percent of the total paper and paperboard consumption. Asia has been a net importer throughout the period, while North America and lately especially Europe have been the largest net exporters. Latin America only accounts for about 3 percent of the global production and consumption of paper. In 2009, the largest paper and paperboard consumers/producers were China (86.4/85.7 million tonnes), United States (71.6/71.7 million tonnes), and Japan (26.3/27.3 million tonnes) (RISI 2011a). As shown in Figure 1, production and consumption series for paper and paperboard are almost identical, indicating that paper production has been, and still is, located near the markets.

[Place Figure 1 approximately here]

The most important raw materials in paper and paperboard production are wood pulp and recovered paper. Figure 2 depicts the production (i.e. recovery) of RP and wood pulp by grade [2]. As shown, the production of RP is skyrocketing, making it the fastest-growing raw material in paper industry. The world's waste paper recovery increased by 490 percent between 1970 (30.8 million tonnes) and 2009 (182 million tonnes). Some of the most important factors that have influenced the demand for recovered fiber in P&PI positively include: 1) insufficient virgin pulp and RP fiber supply in Asia along with the region's (and particularly China's) growing fiber consumption, 2) increased demand for all raw materials, 3) technological progress in the areas of, for example, deinking and screening of impurities (Diesen 2007 p. 81), 4) good price competitiveness in comparison to virgin fiber, and 5) increased environmental awareness (Hujala et al. 2010).

Figure 2 also shows how the production of chemical pulp almost doubled between 1970 (65.8 million tonnes) and 2009 (119 million tonnes). Instead, the manufacturing of mechanical pulp increased until 1990 but has stagnated since then, being 28.5 million tonnes in 2009 (about one fourth of the production of chemical pulp). Mechanical pulp is used largely for products like newsprint and mechanical papers, the use of which is declining in North America and Western Europe due to the increased popularity of electronic media. Moreover, several closures of mechanical paper machines and mills in Finland and elsewhere in Western Europe cut overcapacity in 2008 (Valtonen 2008 p. 21). In Asia, growing paper demand has boosted the use of RP and chemical pulp instead of mechanical pulp because the production of mechanical pulp is typically integrated with paper production. According to the Mill Project database provided by RISI (2011b) [3], several new mechanical pulp lines and pulp mills have been established in China since 2004, but the region's mechanical pulp production capacity still falls short of fulfilling paper mills' needs. Recycled fiber can be used to make largely same end products as mechanical pulp, but it is usually

impossible to use RP as a substitute for chemical pulp. Therefore, increases in Asia's paper production have required higher RP and chemical pulp imports to the area, because of which the global RP and chemical pulp output has increased. Semi-chemical pulp has been less important in world-scale paper and paperboard manufacturing (9.15 million tonnes in 2009). However, its production shows a slightly increasing trend after the late 1990s.

[Place Figure 2 approximately here]

Market pulp (i.e. pulp sold and bought on the open market) is mainly chemical pulp. In 2009, chemical pulp exports were about 40 million tonnes in total, almost thirteen times those of mechanical pulp. Figures 3 and 4 show the production and consumption of RP and chemical pulp by region.

[Place Figure 3 approximately here]

[Place Figure 4 approximately here]

Waste paper recovery depicts an increasing trend in every region. Figure 3 shows clearly that by far the largest expansion of RP consumption took place in Asia over the past twenty years or so, while the simultaneous increases in the recovery of RP in the region were far smaller than the rise in consumption, meaning that Asia and China in particular became progressively less self-sufficient in RP supply. As a consequence, Asia has come to rely increasingly on massive imports of RP from North America and Europe.

As depicted in Figure 4, North American and European chemical pulp production has stagnated or decreased during the past years, reflecting the maturity of the paper products markets in these regions. Nevertheless, these two areas are still the largest chemical pulp producers. However, Latin America has rapidly gained a position as a major player in the global pulp industry: the total chemical pulp production of the area almost doubled between 2002 and 2009. In addition, more than half of the production was exported in 2009. In contrast, Asia is increasingly less self-sufficient in chemical pulp, and relies on larger volumes of imports from the other world regions, especially from Latin America.

Chemical pulp can be divided further into bleached softwood kraft pulp (BSKP), bleached hardwood kraft pulp (BHKP), unbleached kraft pulp and sulfite pulp (unbleached and bleached). “Kraft” refers to sulfate pulping process and “hardwood” and “softwood” to the raw material. Softwood is wood from conifers (for example pines and spruces) while hardwood comes from broad-leaved trees such as acacia, birch and eucalyptus. According to the RISI’s Industry Statistics database, chemical pulp exports consist mainly of BHKP (19.9 million tonnes and 49.9 percent of the total chemical pulp exports in 2009) and BSKP (17.5 million tonnes and 43.8 percent in 2009). In turn, RP exports were over 55 million tonnes. Thus, the three most exported raw materials in P&PI are RP, BHKP and BSKP. As shown in Figures 3 and 4, production of market pulp and RP is not necessarily located near consumption (unlike with paper and paperboard). Table 1 shows the percentages of the global production and consumption for the three raw materials by region.

[Place Table 1 approximately here]

As shown in Table 1, Latin America's recent success in chemical pulp markets is almost entirely due to BHKP. Latin America's BHKP production transcended that of Europe in 2007 and that of North America in 2009 and was the second largest after Asia in 2009. In 2009, Latin America accounted for more than half (56 percent) of the world's total BHKP exports (RISI 2011a). Brazil is the leading producer of BHKP (mainly from eucalyptus) and there are large manufacturers in Uruguay and Chile as well (Bracelpa 2010). In 2009, these three countries accounted for over 98 percent of Latin America's BHKP production and almost 100 percent of the exports (RISI 2011a). In comparison to the northern species such as birch and aspen, the cost efficiency of eucalyptus fiber is superior: the trees grow fast and harvesting is relatively inexpensive. For example, in Brazil, the harvest rotation of eucalyptus is about 7 years and the yield is about 44 m³ per hectare in a year, while Scandinavian birches can be harvested after 35-40 years of growth and their yearly yield is 4-6 m³/ha (Bracelpa 2010). Acacia, another commonly planted tree species e.g. in Indonesia, is similar to eucalyptus.

Due to the growing demand for paper and paperboard particularly in China, Asia has increased its share in every aspect of pulp and RP, but consumption has grown considerably faster than production. According to RISI (2011a), Asia is nowadays the largest BSKP, BHKP and RP importer which is in many respects due to China's hunger for fiber. In 2009, China alone accounted for 43 percent of Asia's chemical pulp consumption and 65 percent of the imports. Corresponding figures for RP were 55 percent (consumption) and 79 percent (imports).

North America's share of production and consumption of BSKP, BHKP and RP has declined together with the region's decreasing demand for paper products. The focal point of BHKP production has shifted from North America to Latin America, while Europe's share of BSKP

production has expanded (this is most likely due to the negative development in North America). Europe's significance in both BHKP and BSKP consumption remained roughly the same between 1992 and 2009. Also Europe's share of RP production has held at about 30 percent of the total production.

Discussion based on figures and tables is always only descriptive by nature, but we are also interested in the statistical significance of the phenomena. Moreover, the investigation of the relations between the ongoing dynamic changes in P&PI requires econometric analysis. We next proceed to the description of the research methodology and then use gravity models of international trade to explain shifts in the exports of BSKP, BHKP and RP.

Research Methodology

Gravity Models of International Trade

Gravity models of international trade predict that the flow of commodities between two countries is positively related to their size and negatively related to their distance. Over time, other explanatory variables have been added into the models to capture the effects of the supply and demand conditions in the exporter and the importer. Gravity models have been used extensively in the literature of international trade to evaluate the impacts of trade liberalization and preferential trading agreements, to predict trade potentials of countries and to give policy prescriptions. Tinbergen (1962) and Pöyhönen (1963) first introduced the gravity model in this context, while Linnemann (1966) augmented their work. In the simplest form of the model,

$$\begin{aligned} \ln T_{ij} = & \alpha_0 + \beta_1 \ln GDP_i + \beta_2 \ln GDP_j + \beta_3 \ln POP_i + \beta_4 \ln POP_j + \beta_5 \ln D_{ij} \\ & + \beta_6 X_{ij} + \varepsilon_{ij} \end{aligned} \quad (1)$$

the volume of trade T is defined by supply conditions in the exporting country i (GDP and population), demand conditions in the importing country j (GDP and population) as well as bilateral trade resistance factors (transport costs approximated by geographical distance D), and trade preference factors X_{ij} (e.g. common border and preferential trading agreements). Some authors (e.g. Serlenga and Shin 2007) drop population from equation (1) to avoid multicollinearity. In addition, Anderson and van Wincoop (2003) stress that the volume of trade between any two countries also depends on what they call “multilateral trade resistance”, i.e. factors that impact on how difficult it is for the countries to trade with the rest of the world. High multilateral resistance in either of the countries increases the bilateral trade volume.

The early contributions to explaining the volume of trade via gravity models were criticized for not having a proper theoretical foundation. However, it has later been demonstrated that the predictions of the models can be derived from various models of international trade, including Ricardian, Heckscher-Ohlin and increasing-returns-to-scale models (see for example the seminal paper by Anderson 1979, and Bergstrand 1985, 1989, 1990, Helpman and Krugman 1985, Deardorff 1998, and Anderson and van Wincoop 2003). Therefore, the gravity model does not rule out the theory of comparative advantage but can actually be derived from it.

Although the bulk of the research analyzes the volume of aggregate trade (or exports or imports), some studies focus on the sectoral level (Fernandes 2006, Vicarelli et al. 2008). Even more disaggregated data can be used. Koo and Karemera (1991) and Koo et al. (1994) revise the gravity model of trade for a single commodity, demonstrating that gravity models can also be applied to single commodity markets: Koo and Karemera analyze wheat trade, while Koo et al. investigate the trade of meat. In the same spirit, Dascal et al. (2002) estimate gravity equations for EU wine

exports and imports, and Amponsah and Ofori-Boadu (2006) analyze textile and apparel imports to United States from the key trading partners. Kangas and Niskanen (2003), Välikauppi et al. (2006), Polyakov and Teeter (2007), Zhang and Li (2009), and Akyüz et al. (2010) use gravity models in the context of forest products trade. Analyzing the trade of a single commodity means that it is important to include regressors that impact on the supply and demand of that commodity, therefore affecting its export supply and import demand. Thus, Dascal et al. (2002) include production indices of wine in their gravity equation, while Koo et al. (1994) control for the number of animals in exporting and importing countries to measure livestock production capacity. Polyakov and Teeter (2007) use data on production (supply) and consumption (demand) of pulpwood as the determinants of export supply and, respectively, import demand. In another recent paper, Zhang and Li (2009) explain China's wood products trade with roundwood production (per capita) and Chinese logging restrictions as the measures of export supply and import demand.

Augmented Gravity Model for Pulp Trade

In this paper, we examine the bilateral trade flows of the three most exported raw materials in the global paper and paperboard production: BSKP, BHKP and RP. We extend the basic gravity model with some explanatory variables reflecting the supply and demand conditions in the exporter and the importer, because these contribute to export supply and import demand. As Polyakov and Teeter (2007) highlight, this is necessary when applying the gravity model to a single commodity market. The specifications of our full gravity equation are as follows [4]:

1) BSKP and RP (for RP without FA_{it})

$$\begin{aligned}
\ln T_{ijt} &= \gamma_1 \ln D_{ij} + \gamma_2 NA_i + \gamma_3 LA_i + \gamma_4 NE_i + \gamma_5 CHN_j \\
&+ \beta_1 \ln \left(\frac{GDP_{it}}{POP_{it}} \right) + \beta_2 \ln \left(\frac{GDP_{jt}}{POP_{jt}} \right) + \beta_3 \ln POP_{it} + \beta_4 \ln POP_{jt} + \beta_5 \ln FA_{it} + \beta_6 \ln FA_{jt} \\
&+ \beta_7 \ln RER_{ijt} + \beta_8 DEC_t + \beta_9 DECNA_t + \beta_{10} DECLA_t + \beta_{11} DECNE_t + \beta_{12} DECCHN_{jt} \\
&+ \alpha_{ij} + \varepsilon_{ijt}.
\end{aligned} \tag{2}$$

2) BHKP

$$\begin{aligned}
\ln T_{ijt} &= \gamma_1 \ln D_{ij} + \gamma_2 PF_i + \gamma_3 CHN_j \\
&+ \beta_1 \ln \left(\frac{GDP_{it}}{POP_{it}} \right) + \beta_2 \ln \left(\frac{GDP_{jt}}{POP_{jt}} \right) + \beta_3 \ln POP_{it} + \beta_4 \ln POP_{jt} + \beta_5 \ln FA_{it} + \beta_6 \ln FA_{jt} \\
&+ \beta_7 \ln RER_{ijt} + \beta_8 DEC_t + \beta_9 DECPF_{it} + \beta_{10} DECCHN_{jt} + \alpha_{ij} + \varepsilon_{ijt}.
\end{aligned} \tag{3}$$

Our dependent variable T_{ijt} is pulp exports (BSKP, BHKP or RP) from country i to country j in year t . The regressors common to all models include distance (D), importer dummy for China (CHN), level of economic development (GDP/POP), population (POP), raw material resources (FA , forest area), bilateral real exchange rate (RER), decade dummy (DEC) and the interaction of China and decade dummies ($DECCHN$). In addition, equation (2) for BSKP and RP incorporates exporter dummies [5] for North America (NA), Latin America (LA) and North Europe (NE) as well as the interactions of the exporter and decade dummies ($DECNA$, $DECLA$, $DECNE$) in the model. In contrast, equation (3) for BHKP includes a dummy for planted forests of eucalyptus and acacia (PF) [6] and the interaction of this variable and the decade dummy ($DECPF$). All variables apart from the dummy variables are expressed in logs. Regression coefficients are assumed to be common to all country pairs. The term α_{ij} represents country-pair effects [7] and captures such time-invariant factors that are not included in the model. Finally, ε_{ijt} is the error term, which is assumed homoscedastic and serially uncorrelated.

Common border and common language dummies are often included in gravity models as trade-aiding factors. We exclude these variables due to the nature of our dependent variables. BSKP, BHKP and RP are bulk products usually traded between rather large companies, indicating that common language and border do not have a significant impact on the volume of trade. Also relative production costs might impact on export supply and import demand of pulp. However, these tend to correlate so strongly with GDP per capita that both variables cannot be included in the model.

As is commonly done in the literature, distance D is measured by the distance between the capitals of the bilateral trade pairs (see e.g. Egger 2002). Head and Mayer (2010) discuss the issue of choosing the appropriate measure of distance. Because distance is a proxy for transport costs, it should reduce the volume of exports. The expected sign of γ_l is thus negative.

Exporter's gross domestic product (GDP) per capita GDP_i/POP_i , population POP_i and forest area FA_i impact on the export supply of BSKP and BHKP and, respectively, GDP_j/POP_j , POP_j and FA_j affect the importer's import demand. Although modern information and communication technologies, especially internet, reduce the consumption of printing and writing papers, the level of economic development (measured by GDP per capita) still determines the volume of paper consumption in most countries (Hetemäki 2005 p. 77, McCarthy and Lei 2010, Hujala 2011). In comparison to less developed countries, economically developed countries have stronger domestic (per capita) demand for paper. Also population growth increases the demand for paper. As rising domestic demand for paper-based products depresses export supply of pulp and increases its import demand, we expect β_1 and β_3 to be negative and β_2 and β_4 to be positive with BSKP and BHKP. With RP, we expect β_2 and β_4 to be positive as well. Instead, the expected signs of β_1 and β_3 are

not clear because the influence of GDP per capita on domestic demand of RP is twofold. First, the higher the domestic demand for paper products is (i.e. the higher the country's GDP per capita is), the higher is the demand for RP as raw material. Second, at the same time, the supply of waste paper to be recovered (and exported) is higher as well.

Forest area FA (in km^2) measures the long-run availability of raw material for pulp. With BSKP and BHKP, an increase in the exporter's forest area FA_i should boost export supply. On the other hand, BHKP exports are largely dominated by Brazil (about 7 million tonnes in 2008) and Indonesia (about 2.6 million tonnes in 2008), both of which suffer from severe deforestation (see e.g. FAO 2011b). Because FA measures the total area of forested land, not only commercial or planted forests, this might result in a negative coefficient for exporter's forest area in the case of BHKP. With RP, we exclude FA_i from the model because the raw material for RP is paper, not wood. The coefficient of FA_j is expected to be negative, as paper-producing countries with smaller forest resources need to import pulp and RP from elsewhere.

Bilateral real exchange rate (RER) measures the evolution of competitiveness. For example, Brun et al. (2005), Carrère (2006) and Rault et al. (2009) use it as an explanatory variable in a gravity model of bilateral trade. As Brun et al. highlight, the bilateral real exchange rate also captures changes in relative prices, which impact on the comparative advantage of countries. This is important when panel data with a long time dimension is used to estimate a gravity model. Here, RER is calculated as follows (see also Carrère 2006):

$$RER_{ijt} = \left(\frac{CPI_{jt}}{CPI_{it}} \right) \left(\frac{NER_{it}}{NER_{jt}} \right), \quad (4)$$

where *CPI* is the consumer price index and *NER* the nominal exchange rate against USD (local currency units per United States dollar). A depreciation of the exporter's currency against that of the importer improves the competitiveness of the exporter and leads to an increase in *RER*. We thus expect the coefficient of *RER* to be positive.

The interactions of the area dummies with the decade dummy (*DECNA*, *DECLA*, *DECNE* and *DECCHN*) capture such additional variation in the trade flows that cannot be explained by the other explanatory variables. Exporter and China dummies were chosen on the grounds of the analysis of global pulp and paper markets presented earlier. Exporter dummies *NA*, *LA* and *NE* equal one if the exporting country is situated in the geographic area in question, 0 otherwise. China dummy *CHN* equals one when China is the importing country. Decade dummy *DEC* equals one if the year ≥ 2000 , and interaction terms *DECNA*, *DECLA*, *DECNE* and *DECCHN* combine the region and decade dummies. Thus, *DECNA*, *DECLA* and *DECNE* equal one if the exporter is situated in that region and year ≥ 2000 and, respectively, *DECCHN* equals 1 if China is the importer and year ≥ 2000 . China's growing role in the world trade should be visible in the imports of BSKP, BHKP and RP. In addition, we expect to observe the increased importance of planted eucalyptus and acacia forests for BHKP exports in the 2000s via a positive coefficient of *DECPF*.

Data Description

The data for this study were collected from various sources. The data on paper and paperboard, wood pulp, RP and chemical pulp production and consumption from 1970 to 2009 are from the ForesSTAT database provided by the UN's Food and Agriculture organization (FAO) (FAO 2011a). The data on production, consumption and trade of BSKP, BHKP and RP between 1992 and 2009 originate from the Industry Statistics database of RISI (RISI 2011a). The annual bilateral

trade flows of BSKP, BHKP and RP between 1990 and 2008 come from RISI as well. GDPs, populations, forest areas, official exchange rates (local currency units per USD) and consumer price indices between 1990 and 2008 are from World Development Indicators (WDI) database by the World Bank (2011). As the forest area was only available for 1995, 2000 and 2005, the variable has been interpolated and extrapolated for the other years of the sample period. The distances between the bilateral trade pairs originate from an online tool (www.indo.com/distance).

Summary statistics for the variables in levels are presented in Table 2. In the estimations, all the variables are in logs. The time period is 1990-2008. In the empirical analysis, the number of observations varies between models due to missing values.

[Place Table 2 approximately here]

Estimation Methods

Gravity models of trade used to be estimated by ordinary least squares (OLS) using cross-sectional data. However, more recent research has acknowledged that using OLS is problematic. For example, Cheng and Wall (2005) and Serlenga and Shin (2007) show how ignoring unobserved heterogeneity results in biased OLS estimates of bilateral trade relationships. Santos Silva and Tenreyro (2006) note, in addition, that log-linearization of the gravity equation leads to severely biased estimates when heteroscedasticity is present. They also show that heteroscedasticity seems to be a severe problem both in the traditional gravity equation as well as in the gravity equation that takes multilateral trade resistance into account. Another shortcoming is that cross-sectional data do not account for time dimension.

In response to the problems of cross-sectional analysis, panel data models have become increasingly popular. They make it easier to control for heterogeneity: for example, Micco et al. (2003) and Cheng and Wall (2005) stress that panel data econometrics taking the individual effects into account reduces the heterogeneity bias. The inclusion of time-invariant explanatory variables (distance and area dummies in our model) rules out the use of fixed effects (FE) estimator. Unlike the FE estimator, random effects (RE) estimator does not automatically drop the time-invariant regressors. However, some of the explanatory variables might be correlated with the unobserved country-specific (or bilateral, in our case) effects. For example, Anderson and van Wincoop (2004) discuss the role of trade costs in determining the volume of trade. In addition to physical transportation costs, these comprise information, enforcement, legal, regulatory and other kinds of transaction costs. Institutional quality in the exporting and importing countries as well as institutional and cultural distance between the trading partners have been found to impact on the magnitude of transactions costs (de Groot et al. 2004, Linders et al. 2005). All four factors are likely to correlate with location, physical distance and level of economic development. Some of the explanatory variables, therefore, are likely to be correlated with the bilateral effects, thus making the RE estimator inconsistent. Even if some of the factors listed (such as cultural distance) are not likely to be relevant in the trade of pulp, the concern is still valid in our model.

Under these circumstances (when the FE estimator cannot be used), a potential estimation technique is that of Hausman and Taylor (1981). It instruments the endogenous explanatory variables (that are correlated with the country-specific, or bilateral, effects) with their transformations and the exogenous variables already in the model, meaning that the challenging task of finding valid external instruments is avoided. E.g. Egger (2002), Brun et al. (2005), Carrère (2006), Serlenga and Shin (2007), and Rault et al. (2009) use Hausman-Taylor methodology in the

context of gravity models of trade. The version of Amemiya and MaCurdy (1986) uses more instruments and thus is likely to be more efficient. However, it can only be applied for balanced panels, implying that using it in our case is not possible without a significant decrease either in the number of observations or periods.

In this paper, we use various different groupings of variables that are most likely to be correlated with α_{ij} as instrumented variables to check the robustness of our model. All regression analyses are conducted using Stata/IC software (version 10.1 for Windows).

Hausman (1978) contrast test is used to detect the presence of endogenous regressors that are correlated with the unobserved heterogeneity terms. We use the test for three purposes. First, we confirm the inconsistency of the RE estimator by comparing the coefficients obtained by FE and RE estimators. If the null hypothesis that all the regressors are exogenous is rejected, the RE estimator is inconsistent, implying that the Hausman-Taylor (HT) estimator should be used (if we want to include the time-invariant regressors). Second, we use the Hausman test to compare the FE estimator and the HT estimator to find out whether an additional source of correlation between the bilateral effects and the explanatory variables exists (see Baltagi 2005 p. 132). If the null hypothesis cannot be rejected, additional source of correlation does not seem to exist, indicating that the instruments used are legitimate. Third, as recommended by Guillotin and Sevestre (1994), we compare the results from the HT estimations to those of the RE estimations. The rejection of the null hypothesis implies now that the HT estimator is consistent whereas the RE estimator is not, and that the instrumented variables are endogenous.

Estimation Results

Estimation results for BSKP, BHKP and RP are presented in Table 3. Because the Hausman specification test implies that the RE estimator is inconsistent in all of our models (the results are available upon request), we report the results for the HT estimator only. The explanatory variables are BSKP exports (Models 1 and 2), BHKP exports (Models 3 and 4) and RP exports (Model 5). For BSKP and BHKP, we report the HT estimation results with two sets of instrumented variables. In Models 1 and 3, these comprise distance, GDP per capita and population in the exporter and the importer, real exchange rate and forest area in the importer. Model 2 adds the interactions of the decade dummy and the exporter area and “China as the importer” dummies to the list of the instrumented variables, while Model 4 adds the interactions of the decade dummy with *PF* and China dummies. The instrumented variables of Model 5 are distance and GDP per capita in the exporter and the importer. The variables have been chosen based on the Hausman specification test results reported at the bottom of Table 3. First, the test between FE and HT estimators tells whether an additional source of correlation between the bilateral effects and the explanatory variables exists. If the null hypothesis cannot be rejected, the set of instruments used in the model is appropriate. Second, the test between HT and RE estimators tells whether the HT estimator gives distinctly better estimation results than the RE model i.e. whether the instrumented variables are endogenous.

The results discussed next are extremely robust to the use of different sets of instrumented variables (results are again available upon request from the authors), but we only report the results for the specifications where the HT estimator is consistent and the instrumented variables seem to be endogenous.

[Place Table 3 approximately here]

With BSKP (Models 1 and 2), all the regression coefficients of the factors contributing to export supply and import demand have the expected signs and almost all of them are significant at the 5 percent level, most of them being significant even at the 1 percent level in both models. The coefficients and their statistical significance are very robust. Notably, population in the exporter is not statistically significant but population in the importer is. Moreover, GDP per capita in the exporter is significant at the 5 percent level while GDP per capita in the importer is significant at the 1 percent level. Altogether, this could indicate that import demand is more important than export supply in determining the volume of BSKP trade between two countries. Perhaps it is the case that import demand reacts more strongly to changes in market conditions whereas countries export as much as possible given the limit set by other countries' import demand. As to export supply, the clearly most significant factor seems to be the exporter's forest area. The fact that distance and real exchange rate are not significantly different from zero even at the 10 percent level suggests that, in comparison to the variables contributing directly to export supply and import demand, transportation costs and real exchange rate are of minor importance in the trade of BSKP. The reasons for the counterintuitive result concerning distance are discussed below in the context of the RP estimation results.

The coefficient of the interaction term decade dummy*North Europe is positive and statistically significant at the 1 percent level, thus confirming the increased importance of Northern Europe in BSKP exports in the 2000s. Also North America seems to have gained in importance in comparison to the rest of the world but less strongly than Northern Europe. Furthermore, the positive and highly significant coefficient of the interaction term decade dummy*China clearly shows the exceptional

importance of China as an importer in the 2000s, as expected. The negative coefficient of the decade dummy is more than offset by the positive coefficient of importer's GDP per capita. If the growth rate of importer's GDP per capita has surpassed that of BSKP exports in the 2000s, the negative coefficient of the decade dummy is explained (the same holds for BHKP exports).

Models 3 and 4 present the estimation results for BHKP. The model has been changed to account for the importance of planted eucalyptus and acacia forests in the form of a *PF* dummy instead of the exporter region dummies [8]. This is more appropriate for BHKP because this dummy captures the increased importance of not only Brazil but also Indonesia. The results are again fairly robust.

All in all, the estimated coefficients differ somewhat from those of BSKP. The coefficient of importer's GDP per capita is positive as expected ($p < 0.01$). As exporter's GDP per capita is statistically insignificant, there is again tentative evidence that import demand is more important than export supply in determining the volume of exports. Interestingly, exporter's and importer's forest areas have signs contrary to those expected. This may be a consequence of the fact that BHKP exports are largely dominated by Brazil and Indonesia. Because exporter's forest area measures the total area of forested land, not only commercial or planted forests, the negative coefficient of the variable most likely reflects the deforestation in these countries: as mentioned above, both Brazil and Indonesia suffer from severe deforestation of rainforests. Also, smaller forest area is needed to produce the same amount of pulp from eucalyptus or acacia compared to, for example, birch. In addition, BHKP is exported especially from Brazil to the traditional paper production countries in Western Europe and North America that are rich in forests such as France, Germany and United States. This could explain the positive coefficient of importer's forest area.

In contrast to BSKP, the positive coefficient of real exchange rate is now statistically significant at the 1 percent level. There is also some evidence of a negative impact of distance (and transport costs) for BHKP trade. Both of these results are in line with the predictions of gravity models of international trade.

The statistically significant positive coefficient of the interaction term *DEC PF* highlights the importance of eucalyptus and acacia producing countries as BHKP exporters in the 2000s. It also shows how the role of planted forests has become more important in BHKP production. As in the case of BSKP, the statistically significant positive coefficient of *DEC CHN* depicts China's significance as an importer in the 2000s. This result implies that the change has been too drastic to be explained by the other explanatory variables, i.e. the increases in China's import demand for BHKP (as well as for BSKP and RP) are higher than for example China's GDP per capita growth would predict.

Finally, Model 5 depicts the results for RP. Only one model is presented because the narrowest set of instrumented variables was already enough for the HT estimator to be consistent. As in the case of BSKP, almost all of the estimated coefficients have the expected signs and most of them are significantly different from zero at the 1 percent level. The estimated coefficients are also very robust between different sets of instrumented variables (the results are available upon request). Latin America dummy and its interaction with the decade dummy have been dropped due to multicollinearity.

As to distance, the results differ from the countertheoretical results of BSKP: the coefficient of the variable is now negative and statistically significant at the 1 percent level. Therefore, transportation

costs seem to have a negative impact on the trade of RP between two countries. This may be caused by the significant distinctions in the transport cost to product value ratio, which is much higher especially for the lower grades of RP than for BSKP. Also, the availability of RP differs from that of virgin fiber. Every country with proper infrastructure in place can collect and, thus, export waste paper. Instead, the availability of certain type pulpwood is highly dependent on geographic location and climate.

The export supply of RP seems to depend heavily on exporter's population, since the coefficient of exporter's GDP per capita is statistically insignificant [9]. The coefficient of exporter's population is negative as expected. Importer's GDP per capita and population have the expected positive sign and are highly significant. All in all, the results indicate again that import demand plays a larger role than export supply in determining the volume of trade. Instead, importer's forest area seems to be less important. The explanation for this could be that RP's import demand depends on the demand for paper in the importer instead of the availability of a substitutable raw material (i.e. virgin fiber).

Contrary to our expectations, the coefficient of real exchange rate is negative and statistically significant, suggesting that depreciation of the exporter's currency against that of the importer leads to a decrease in RP exports. This might reflect the importance of the United States as RP exporter: the country's domestic demand for RP has been decreasing while recovery has been on the increase, meaning that RP must have been exported abroad. Furthermore, the structural changes that have occurred in the United States waste collection systems (particularly the rise in single-stream collection of recyclables) have favored exports to China, where cheap labor is available to sort the paper for recycling by hand. Another possible explanation is that the demand for RP is fairly price-

inelastic due to limited availability of a substitutable raw material in paper and paperboard production.

North American countries seem to have been particularly important RP exporters in the global scale (the coefficient of North America dummy is positive and highly significant) although their relative importance has decreased slightly during the 2000s (the interaction term *DECNA* has a negative sign with a p-value < 0.01). This result is almost entirely due to exports from the United States. In 2008, the United States exported over 17 million tonnes of RP, which is more than thirteen times the export volume of Canada. China (13.4 million tonnes), Canada (1.8 million tonnes) and Mexico (1.4 million tonnes) were the largest export destinations. According to RISI (2011a), the United States' exports to Asia and Latin America have been on the increase while exports to Canada have decreased during the last decade. The coefficient of *DECNE* is negative and significant at the 1 percent level, suggesting that Northern European countries reduced their share of global RP exports during the 2000s. Their exports were already in the 1990s statistically significantly lower than those of the rest of the world. This result is in line with the negative coefficient of distance: Northern European countries are geographically far from the other RP markets and it is not that profitable to export RP from the area. Furthermore, Northern European paper industry utilizes most of the RP collected so the region's export supply is limited. In line with the results for BSKP and BHKP, China's hunger for fiber is evident with RP as well. The estimated coefficients of the "China as the importer" dummy and the interaction term *DECCHN* are positive and highly significant. The total RP exports in the world have increased in the 2000s, as implied by the positive and statistically significant coefficient of the decade dummy. Therefore, in contrast to BSKP and BHKP, the rise in global RP exports seems to have been faster than the rise in importers' GDP per capita.

Conclusions

The global P&PI is currently facing broad structural changes caused by global shifts in demand and supply. Planted forests (of eucalyptus and acacia) and recovered paper (RP) have quickly increased their importance as a raw material for paper and paperboard production at the expense of virgin fiber from the more traditional tree species. Although advances in information and communication technologies could reduce the demand for paper, and the growth of paper consumption has indeed flattened in developed economies, the consumption is increasing in the global scale. Moreover, the focal point of production is moving from the Western world to the rapidly growing markets in Southeast Asia. In this paper, we analyzed how the changes in P&PI are reflected in raw material (chemical pulp and RP) trade flows.

This study paid special attention to the specification and valid estimation of the gravity model of international trade for chemical pulp and RP exports. The explanatory variables were chosen carefully to capture changes in export supply and import demand of bleached softwood kraft pulp (BSKP), bleached hardwood kraft pulp (BHKP) and RP. The Hausman-Taylor estimator for panel data was used in the estimations, and the estimated coefficients for both pulp grades and RP, respectively, were found to be robust between different model specifications.

According to our estimation results, some of the most traditional gravity variables have had the expected impact on the volume of exports. However, the effects vary between BSKP, BHKP and RP. For example, distance, the proxy for transport costs, seems to decrease RP exports but not BSKP exports. This may be caused by the significant differences in the transport cost to product

value ratio, which is much higher especially for the lower grades of RP than for BSKP. Also differences in the availability of the raw material create distinctions between the two pulp grades and RP. For example, the increased importance of planted eucalyptus and acacia forests in the 2000s is evident in the exports of BHKP. Despite this, the overall results are in line with the roles played by export supply and import demand, which ultimately dictate the volume of international trade. Interestingly, import demand seems to be more important than export supply in determining the volume of exports. Perhaps import demand reacts more strongly to changes in market conditions whereas all countries export as much as possible given the limit set by other countries' import demand.

Our estimations confirmed also that the changes in P&PI dynamics clearly have affected the bilateral trade flows of BSKP, BHKP and RP. It is evident that Asia, particularly China, is the most important driver of chemical pulp and RP trade. China is the second largest pulp producer (wood pulp plus non-wood pulp) in the world (RISI 2011a) but nowhere near fiber self-sufficient. It has had a growing need for paper-making fiber and since the early 1990s, has been able to satisfy that need only by significantly increasing its fiber imports. In fact, it can be said that P&PI has never before seen such an enormous increase in RP and chemical pulp consumption in one region that has been sourced more by imports than domestic production. Importantly, China's outstanding rate of growth in chemical pulp and RP imports has been largely driving the increased importance of planted forests in the exports of BHKP, too. For example, the latest figures from January 2011 show that China accounted for 31 percent of Brazilian pulp exports (Europe 39 percent).

How this trend will evolve in the future is a subject for future study. Will Asia become more self-sufficient in fiber or will it increase its fiber imports further? In the future research, application of

gravity models and panel data estimation methodology in the context of paper and/or paperboard trade would also be interesting. Moreover, it would be useful to try to shed more light on the factors that have played a role in transforming the trade flows of pulp, RP, paper and paperboard beyond the export-supply and import-demand variables that were included in our model.

References

- Akyüz, K.C., I. Yildirim, Y. Balaban, T. Gedik, and S. Korkut. 2010. Examination of forest products trade between Turkey and European Union countries with gravity model approach. *Afr. J. Biotechnol.* 9(16):2375-2380.
- Amemiya, T., and T.E. MaCurdy. 1986. Instrumental-Variable Estimation of an Error-Components Model. *Econometrica* 54(4):869-880.
- Amponsah, W.A., and V. Ofori-Boadu. 2006. Determinants of U.S. Textile and Apparel Import Trade. Paper prepared for *American Agricultural Economics Association Annual meeting*, July 23-26, Long Beach, CA.
- Anderson, J.E. 1979. A Theoretical Foundation for the Gravity Equation. *Am. Econ. Rev.* 69(1):106-116.
- Anderson J.E., and E. van Wincoop. 2003. Gravity with Gravitas: A Solution to the Border Puzzle. *Am. Econ. Rev.* 93(1):170-192.
- Anderson J.E., and E. van Wincoop. 2004. Trade Costs. *J. Econ. Lit.* 42(3):691-751.
- Baltagi, B.H. 2005. *Econometric Analysis of Panel Data*, 3rd edition. John Wiley and Sons, New York, NY. 302 p.

- Bergstrand, J.H. 1985. The Gravity Equation in International Trade: Some Microeconomic Foundations and Empirical Evidence. *Rev. Econ. Statist.* 67(3):474-481.
- Bergstrand, J.H. 1989. The Generalized Gravity Equation, Monopolistic Competition, and the Factor-Proportions Theory in International Trade. *Rev. Econ. Statist.* 71(1):143-153.
- Bergstrand, J.H. 1990. The Heckscher-Ohlin-Samuelson Model, the Linder Hypothesis and the Determinants of Bilateral Intra-Industry Trade. *Econ. J.* 100(403):1216-1229.
- Brun, J.-F., C. Carrère, P. Guillamont, and J. de Melo. 2005. Has Distance Died? Evidence from a Panel Gravity Model. *World Bank Econ. Rev.* 19(1):99-120.
- Carrère, C. 2006. Revisiting the Effects of Regional Trade Agreements on Trade Flows With Proper Specification of the Gravity Model. *Europ. Econ. Rev.* 50(2):223-247.
- Cheng, I-H., and H.J. Wall. 2005. Controlling for Heterogeneity in Gravity Models of Trade and Integration. *Federal Reserve Bank of St. Louis Rev.* 87(1):49-63.
- Dascal, D., K. Mattas, and V. Tzouvelekas. 2002. An Analysis of EU Wine Trade: A Gravity Model Approach. *Int. Advances Econ. Res.* 8(2):135-147.
- de Groot, H.L.F., G.-J. Linders, P. Rietveld, and U. Subramaniam. 2004. The Institutional Determinants of Bilateral Trade Patterns. *Kyklos* 57(1):103-124.
- Deardorff, A.V. 1998. Determinants of Bilateral Trade: Does Gravity Work in a Neoclassical World? P. 7-22 in *The Regionalization of the World Economy*, Frankel, J.A. (ed.). University of Chicago Press, Chicago.
- Diesen, M. 2007. *Paper Making Science and Technology Book 1, Economics of the Pulp and Paper Industry*. Paperi ja Puu Oy, Jyväskylä, Finland. 222 p.

Egger, P. 2002. An Econometric View on the Estimation of Gravity Models and the Calculation of Trade Potentials. *World Economy* 25(2):297-312.

FAO. 2011a. *ForesSTAT database*. Available online at <http://faostat.fao.org/site/626/default.aspx#ancor>; last accessed Oct. 10, 2011.

FAO. 2011b. *The State of Forests in the Amazon Basin, Congo Basin and Southeast Asia*. Available online at http://foris.fao.org/static/data/fra2010/StateofForests_Report_English.pdf; last accessed Oct. 10, 2011.

Fernandes, A. 2006. Trade Dynamics and the Euro Effect: Sector and Country Estimates. *University of Essex working paper*.

Figueiredo, P.N. 2010. Discontinuous Innovation Capability Accumulation in Latecomer Natural Resource-Processing Firms. *Technol. Forecast. Soc. Change* 77(7):1090-1108.

Guillotín, Y., and P. Sevestre. 1994. Estimations de fonctions de gains sur données de panel: endogénéité du capital humain et effets de la sélection. *Econ. Prévision* 116:119-135.

Hausman, J.A. 1978. Specification Tests in Econometrics. *Econometrica* 46(6):1251-1271.

Hausman, J.A., and E. Taylor. 1981. Panel Data and Unobservable Individual Effects. *Econometrica* 49(6):1377-1398.

Head, K., and T. Mayer. 2010. Illusory border effects: distance mismeasurement inflates estimates of home bias in trade. P. 165-192 in *The Gravity Model in International Trade: Advances and Applications*, van Bergeijk, P.A.G., and S. Brakman (eds.). Cambridge University Press, Cambridge, United Kingdom.

Helpman, E., and P. Krugman. 1985. *Market Structure and Foreign Trade. Increasing Returns, Imperfect Competition, and the International Economy*. MIT Press, Cambridge, MA. 283 p.

- Hetemäki, L. 2005. ICT and Communication Paper Markets. P. 76-104 in *Information Technology and the Forest Sector*, Hetemäki, L., and S. Nilsson (eds.). IUFRO World Series, Vol. 18. IUFRO, Vienna, Austria.
- Hujala, M. 2011. The Role of Information and Communication Technologies in Paper Consumption. *Int. J. Bus. Inform. Syst.* 7(2):121-135.
- Hujala, M., K. Puumalainen, A. Tuppur, and A. Toppinen. 2010. The Role of National Culture and Environmental Awareness in Recovery and Utilization of Recycled Paper. P. 257-273 in *Proceedings of the 2010 biennial seminar of the Scandinavian Society of Forest Economics*. May 19-22, Gilleleje, Denmark.
- Kangas, K., and A. Niskanen. 2003. Trade in Forest Products Between European Union and the Central and Eastern European Access Candidates. *Forest Policy Econ.* 5(3):297-304.
- Koo, W.W., and D. Karemera. 1991. Determinants of World Wheat Trade Flows and Policy Analysis. *Can. J. Agr. Econ.* 39(3):439-455.
- Koo, W.W., D. Karemera, and R. Taylor. 1994. A Gravity Model Analysis of Meat Trade Policies. *Agr. Econ.* 10(1):81-88.
- Linders, G.-J., A. Slangen, H.L.F. de Groot, and S. Beugelsdijk. 2005. Cultural and Institutional Determinants of Bilateral Trade Flows. Available online at <http://ssrn.com/abstract=775504>; last accessed May 30, 2011.
- Linnemann, H. 1966. *An Econometric Study of International Trade Flows*. North-Holland, Amsterdam, Netherlands. 234 p.
- McCarthy, P., and L. Lei. 2010. Regional Demands for Pulp and Paper Products. *J. Forest Econ.* 16(2):127-144.

- Micco, A., E. Stei, and G. Odoñez. 2003. The Currency Union Effect on Trade: Early Evidence from EMU. *Econ. Policy* 18(37):315-356.
- Polyakov, M., and L. Teeter. 2007. Modeling Pulpwood Trade Within the United States South. *Forest Sci.* 53(3):414-425.
- Pöyhönen, P. 1963. A Tentative Model for the Volume of Trade Between Countries. *Weltwirtsch. Arch.* 90(1):93-100.
- Rault, C., R. Sova, and A.M. Sova. 2009. Modelling International Trade Flows Between CEEC and OECD Countries. *Appl. Econ. Lett.* 16(15):1547-1554.
- RISI. 2011a. Industry Statistics database.
- RISI. 2011b. Mill Project database.
- Santos Silva, J.M.C., and S. Tenreyro. 2006. The Log of Gravity. *Rev. Econ. Stat.* 88(4):641-658.
- Serlenga, L., and Y. Shin. 2007. Gravity Models of Intra-EU Trade: Application of the CCEP-HT Estimation in Heterogeneous Panels With Unobserved Common Time-Specific Factors. *J. Appl. Econom.* 22(2):361-381.
- Tinbergen, J. 1962. *Shaping the World Economy: Suggestions for an International Economic Policy*. Twentieth Century Fund, New York, NY. 330 p.
- Toppinen, A., and J. Kuuluvainen. 2010. Forest Sector Modelling in Europe – the State of Art and Future Research Directions. *Forest Policy Econ.* 12(1):2-8.
- Valtonen, K., 2008. Production and exports in the pulp and paper industry. P. 19-22 in *Finnish Forest Sector Economic Outlook 2008 – 2009*, Hänninen, R., and Y. Sevola (eds.). Finnish Forest Research Institute, Vantaa, Finland.

Vicarelli, C., R. De Santis, and S. De Nardis. 2008. The Single Currency's Effect on Eurozone Sectoral Trade: Winners and Losers? *Economics: The Open-Access, Open-Assessment E-Journal* 2(17).

Välikauppi, S., H. Kuittinen, and K. Puumalainen. 2006. Global Fiber Flows in the Pulp and Paper Industry: A Gravity Model Approach. *Proceedings of the 15th International Conference on Management of Technology*. May 22-26, Beijing, China.

World Bank. 2011. World Development Indicators database. Available online at: <http://databank.worldbank.org/ddp/home.do>; last accessed Jun. 10, 2011.

Zhang, D., and Y. Li. 2009. Forest Endowment, Logging Restrictions, and China's Wood Products Trade. *China Econ. Rev.* 20(1):46-53.

Endnotes

[1] Import demand is the difference between domestic demand and domestic supply, while export supply equals domestic supply minus domestic demand.

[2] Chemical pulp is produced by cooking wood chips and chemicals. Mechanical pulp is produced with mechanical energy, for example, by grinding or by refining, and the production is usually integrated with paper manufacturing. Semi-chemical pulp is made by combining chemical and mechanical pulping processes.

[3] RISI is a provider of information for global P&PI.

[4] For RP, we leave out exporter's forest area. The equation is otherwise similar.

[5] North America = United States and Canada; Latin America = Argentina (BSKP and RP only), Brazil, Chile and Mexico (RP only); North Europe = Denmark (RP only), Finland, Norway and Sweden

[6] *PF* dummy equals 1 if the exporter is Brazil, Chile, Spain, Indonesia or Portugal.

[7] The country-pair effects can be thought either fixed or random depending on the estimation method used. With fixed effects estimator (discussed in the context of Estimation Methods), they are assumed fixed, while they are assumed random with random effects and Hausman-Taylor estimators.

[8] The area of planted forests cannot be included in our models as an explanatory variable because the variable is likely to be endogenous: it is highly probable that the volume of exports also impacts on the area of planted forests and not only vice versa.

[9] Exporter's forest area is not included as an explanatory variable because it is unlikely to impact on the supply of RP.

Table titles and figure captions

Table 1. BSKP, BHKP and RP production and consumption by region in 1992, 2000 and 2009

Table 2. Summary statistics

Table 3. Estimation results for BSKP, BHKP and RP

Figure 1. Paper and paperboard production and consumption between 1970 and 2009 by region

Figure 2. Wood pulp and RP production between 1970 and 2009

Figure 3. RP production and consumption between 1970 and 2009 by region

Figure 4. Chemical pulp production and consumption between 1970 and 2009 by region

Table 1. BSKP, BHKP and RP production and consumption by region in 1992, 2000 and 2009

(data source: RISI 2011a)

	BSKP			BHKP			RP		
	1992	2000	2009	1992	2000	2009	1992	2000	2009
Production (% of world's total)									
Asia	5	6	7	23	29	30	28	30	38
Europe	22	27	31	20	20	17	30	31	30
N. America	66	60	52	44	37	24	36	32	24
L. America	4	5	7	11	13	26	4	4	5
Other	2	2	2	2	2	2	2	3	4
Apparent consumption (% of world's total)									
Asia	14	16	29	30	33	41	34	38	52
Europe	33	36	34	25	25	25	31	30	25
N. America	48	42	29	37	34	23	27	24	14
L. America	3	4	4	6	6	8	6	5	6
Other	2	2	3	2	2	2	2	3	3

Table 2. Summary statistics

Variable	Mean	Std. Dev.	Min	Max	N
BSKP exports, tonnes	14.16	101.84	0.00	3 909.11	19 406
BHKP exports, tonnes	9.85	57.49	0.00	1 457.89	21 800
RP exports, tonnes	13.65	149.46	0.00	10 734.10	32 785
Distance, km	7 368.38	5 041.84	56.00	19 857.00	1 353
GDP (exporter), million USD	930 000	1 950 000	38 200	11 700 000	494
GDP (importer), million USD	550 000	1 420 000	9 380	11 700 000	1 026
GDP per capita (exporter), USD	18 901.28	11 119.93	592.10	41 900.79	494
GDP per capita (importer), USD	12 340.09	11 108.02	315.48	41 900.79	1 026
Population (exporter), millions	56.00	71.70	3.05	304.00	494
Population (importer), millions	85.60	212.00	1.97	1 320.00	1 026
Forest area (exporter), km ²	920 031.10	1 960 098.00	20.00	8 092 690.00	75
Forest area (importer), km ²	553 114.50	1 421 778.00	20.00	8 092 690.00	159
Consumer price index (exporter)	85.36	21.28	0.00	136.42	472
Consumer price index (importer)	78.68	29.13	0.00	177.33	992
Nominal exchange rate (exporter)	374.28	1 532.13	0.00	10 260.85	403
Nominal exchange rate (importer)	306.41	1 303.87	0.00	10 260.85	898

Table 3. Estimation results for BSKP, BHKP and RP

	Model 1 (BSKP)	Model 2 (BSKP)	Model 3 (BHKP)	Model 4 (BHKP)	Model 5 (RP)
Distance	-6.768 (-0.89)	-5.720 (-0.32)	-2.702 (-1.09)	-4.968* (-1.71)	-4.652*** (-5.33)
GDP per capita (exporter)	-0.831** (-2.23)	-0.759** (-2.03)	-0.103 (-0.30)	-0.113 (-0.33)	0.312 (0.87)
GDP per capita (importer)	1.619*** (6.80)	1.588*** (6.66)	1.226*** (4.08)	1.278*** (4.20)	1.564*** (8.08)
Population (exporter)	-0.457 (-0.42)	-0.850 (-0.76)	1.010 (1.27)	0.837 (1.04)	-1.438*** (-2.66)
Population (importer)	1.513*** (2.84)	1.511*** (2.84)	-0.279 (-0.39)	-0.341 (-0.48)	0.984*** (3.31)
Forest area (exporter)	6.098** (2.05)	11.451*** (2.82)	-1.629*** (-3.51)	-1.803*** (-3.76)	
Forest area (importer)	-1.862*** (-4.29)	-1.818*** (-4.19)	2.012*** (3.35)	2.113*** (3.48)	-0.162 (-1.11)
Real exchange rate	0.091 (0.93)	0.109 (1.11)	0.462*** (3.82)	0.461*** (3.79)	-0.863*** (-7.51)
North America (exporter)	-1.034 (-0.09)	-11.157 (-0.44)			8.527*** (5.05)
Latin America (exporter)	10.557 (0.70)	10.627 (0.31)			
Northern Europe (exporter)	4.333 (0.56)	7.729 (0.45)			-2.103* (-1.69)
Planted forest (dummy)			-1.982 (-1.12)	-1.897 (-1.06)	
China (importer)	10.376 (0.56)	9.056 (0.22)	-0.465 (-0.08)	0.763 (0.12)	4.924** (2.24)
Decade dummy	-0.546*** (-4.16)	-0.631*** (-4.56)	-0.681*** (-7.81)	-0.675*** (-7.69)	0.489*** (7.42)
Decade dummy * N. America	0.266* (1.81)	0.358** (2.32)			-0.865*** (-9.93)
Decade dummy * L. America	0.187 (0.61)	0.495 (1.44)			
Decade dummy * N. Europe	0.971*** (7.54)	1.023*** (7.79)			-0.680*** (-7.47)
Decade dummy * Planted forest			0.391*** (4.02)	0.393*** (4.03)	
Decade dummy * China	1.122*** (4.88)	1.128*** (4.91)	1.028*** (3.91)	0.984*** (3.70)	1.439*** (7.37)
Constant	-28.798 (-0.47)	-101.064 (-0.68)	1.698 (0.06)	25.826 (0.84)	27.549* (1.95)
Observations	3249	3249	3355	3355	5084
Number of groups	295	295	362	362	573
Hausman test FE vs. HT	3.71	0.28	4.09	2.57	11.02
Hausman test HT vs. RE	chi2(12) 29.35**	chi2(12) 33.45***	chi2(10) 63.00***	chi2(10) 64.44***	chi2(8) 101.6***
	chi2(17)	chi2(17)	chi2(13)	chi2(13)	chi2(12)

z statistics in parentheses (* significant at 10%; ** significant at 5%; *** significant at 1%)

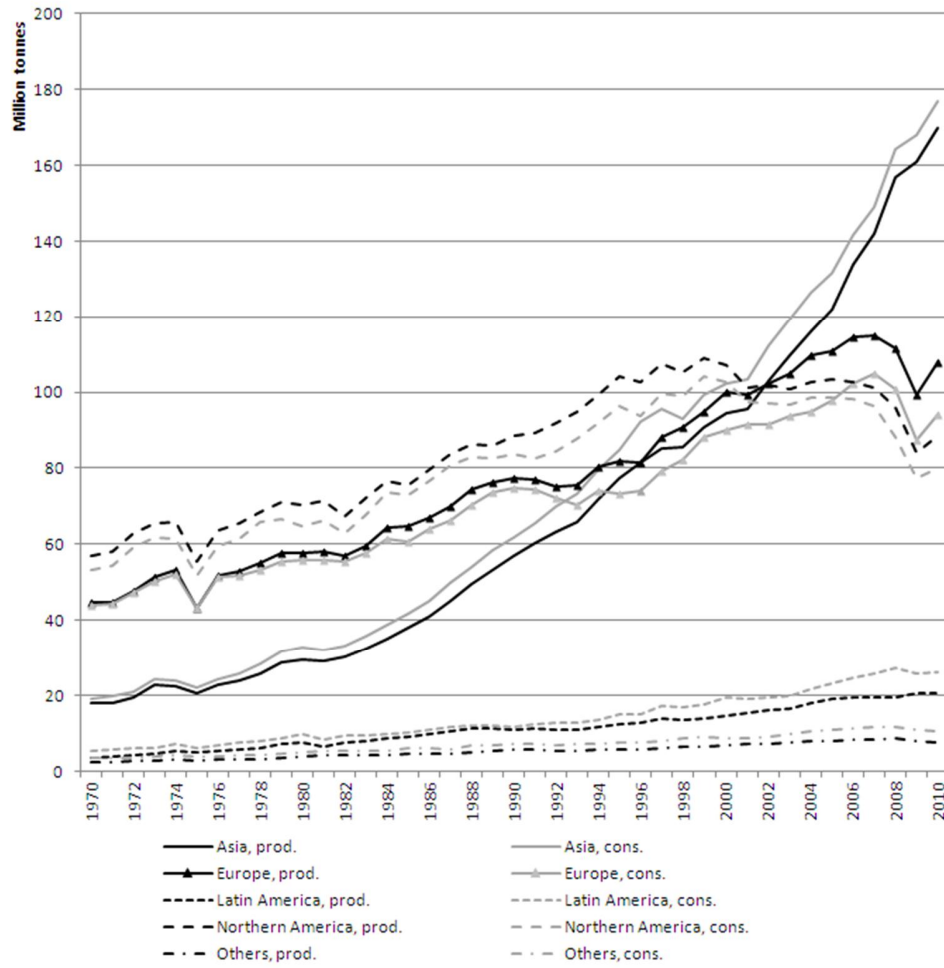


Figure 1. Paper and paperboard production and consumption between 1970 and 2009 by region

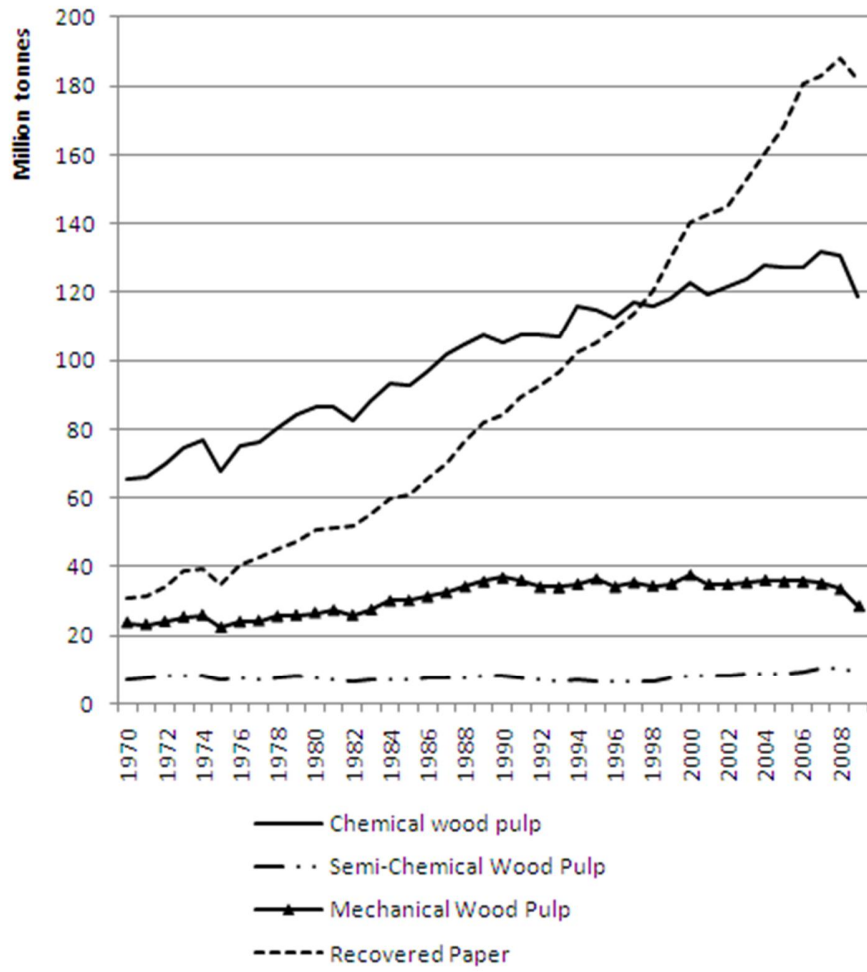


Figure 2. Wood pulp and RP production between 1970 and 2009

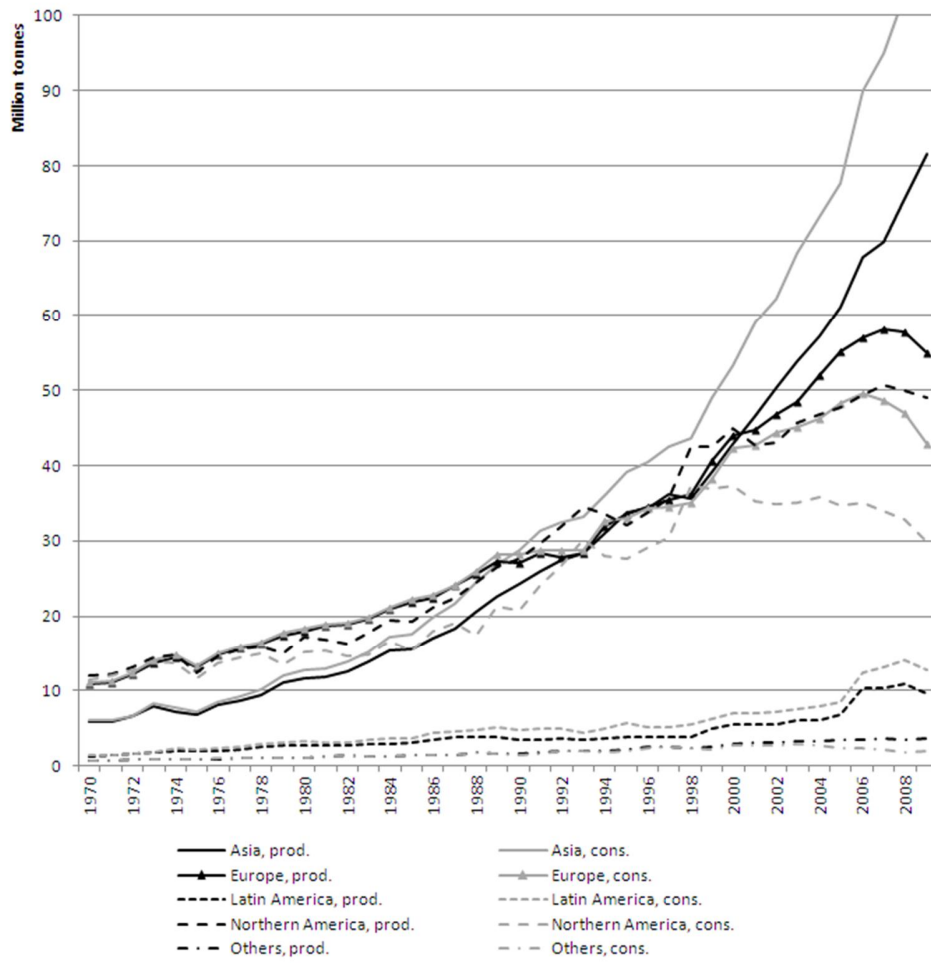


Figure 3. RP production and consumption between 1970 and 2009 by region

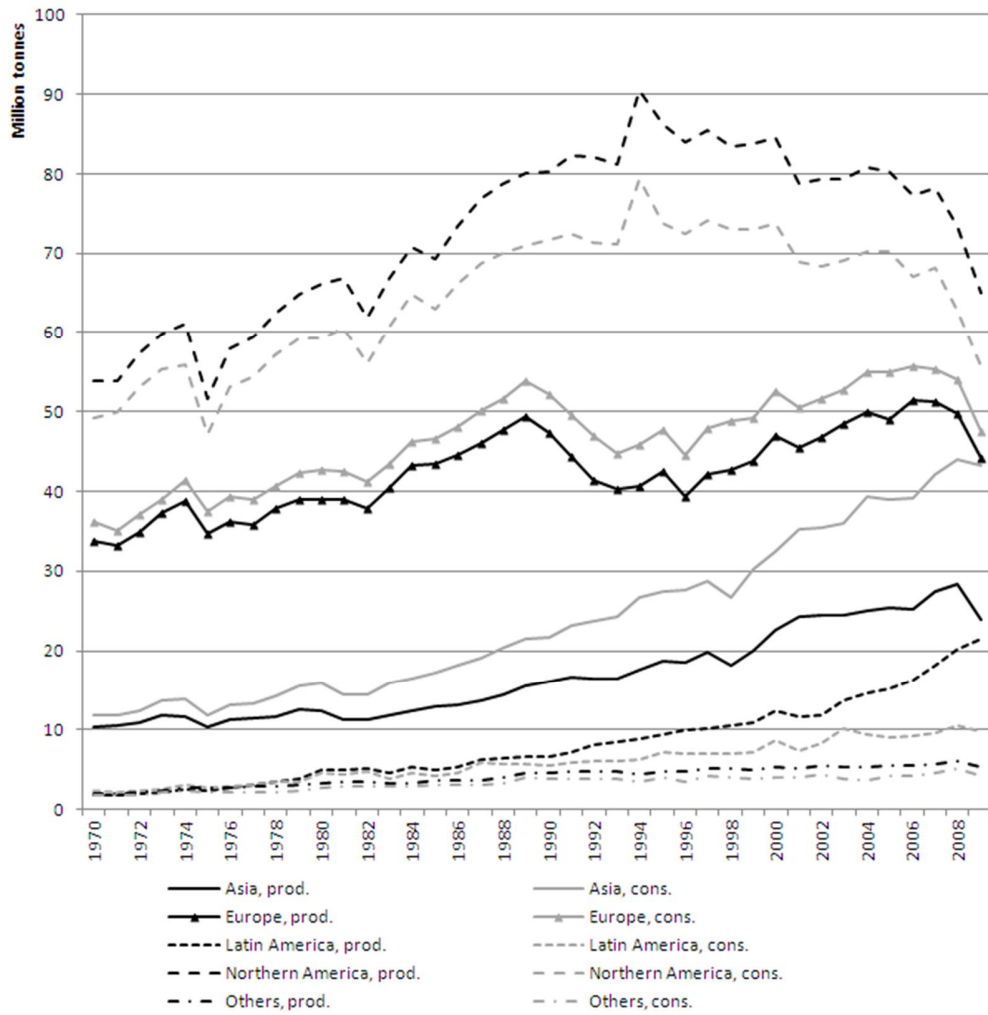


Figure 4. Chemical pulp production and consumption between 1970 and 2009 by region