

**Global scenarios for significant water use reduction in thermal power plants based on cooling water demand estimation using satellite imagery**

Lohrmann Alena, Farfan Javier, Caldera Upeksha, Lohrmann Christoph, Breyer Christian

This is a Author's accepted manuscript (AAM) version of a publication published by Nature Publishing Group in Nature Energy

**DOI:** 10.1038/s41560-019-0501-4

**Copyright of the original publication:** © The Author(s), Springer Nature Limited 2019.

**Please cite the publication as follows:**

Lohrmann, A., Farfan, J., Caldera, U. et al. Global scenarios for significant water use reduction in thermal power plants based on cooling water demand estimation using satellite imagery. *Nat Energy* 4, 1040–1048 (2019). <https://doi.org/10.1038/s41560-019-0501-4>

**This is a parallel published version of an original publication.  
This version can differ from the original published article.**

# Global scenarios for significant water use reduction in thermal power plants based on cooling water demand estimation using satellite imagery

Alena Lohrmann<sup>1\*</sup>, Javier Farfan<sup>1</sup>, Upeksha Caldera<sup>1</sup>, Christoph Lohrmann<sup>1</sup>, Christian Breyer<sup>1</sup>

<sup>1</sup>LUT University, Yliopistonkatu 34, 53850 Lappeenranta, Finland. Correspondence and requests for materials should be addressed to A.L. (email: [Alena.Lohrmann@lut.fi](mailto:Alena.Lohrmann@lut.fi)) or to C.B. (email: [Christian.Breyer@lut.fi](mailto:Christian.Breyer@lut.fi))

Connecting the research on water demand of power plants with mitigation strategies for energy-based water use is an important step to ensure global water and energy security, thus providing more sustainable use of both. Here, we assess the water footprint of 13,863 thermal power plants units with a total active capacity of 4,182 GW worldwide and give an estimate of the current water demand for power production on four different levels, on global, regional, country and river levels. Furthermore, we provide a projection for the energy transition period towards a net zero greenhouse gas emissions economy by 2050. In particular, we show that by following a 'Best Policies Scenario' the water consumption of global power plants can be decreased by about 98%, and water withdrawal by 95% until 2050. Therefore, the suggested pathway provides one potential solution to the problem of water depletion resulting from the water-energy nexus.

**W**ater and energy are closely related. Thermal electricity generation constituted by coal, gas, oil, biomass and nuclear power plants, requires water for cooling purposes. Water is also used in numerous technological processes of harnessing, extracting, and producing energy. Meanwhile, water extraction, treatment and distribution consume energy. This dependency is often called "water-energy nexus" and has been increasingly highlighted by many scholars and policy-makers as a sustainability concern for future planning and for water security<sup>1-3</sup>.

The currently used technologies of thermal power generation heavily depend on water availability. Water scarcity, often perceived as a side issue of climate change, directly affects the capacity and reliability of thermal power. Moreover, increased water temperatures and reduced river flow have led to forced reductions or even interruptions in power generation<sup>4,5</sup> worldwide. This limitation to electricity supply, coupled with rising production costs, may lead to a sharp rise in electricity prices<sup>6,7</sup>.

Thus, it is crucial to understand the contributors to global water stress, one of which is the cooling water demand of thermal power plants, and implement strategies to overcome water resource depletion. The water footprint of cooling the global power plant fleet is typically analysed from the perspective of water withdrawal and water consumption<sup>8</sup>. Water withdrawal is defined as the total amount of water taken from the water source for cooling purposes. Water consumption represents the difference between water withdrawal and the amount of water returned to the source, and is often "lost" by means of evaporation<sup>9</sup>.

Currently, the research on water demand of power plants is conducted using different estimation techniques (using satellite images<sup>10,11</sup>, historical data<sup>12</sup>, and statistical data<sup>8,13</sup>) since it is not commonly reported. Macknick et al.<sup>14</sup> reported water withdrawal and consumption factors for different thermal power plants in the US. Due to the lack of country specific water demand data for thermal power plants, the factors provided by Macknick et al. have been used in recent global studies on water withdrawal and consumption. Studies so far have focused on either the global<sup>8,12,13,15,16</sup> or regional and country<sup>1,10,11,17</sup> level. The research conducted by Flörke et al.<sup>12</sup> and Vassolo et al.<sup>16</sup>, is the base on which the commonly used Global Water System Project (GWSP) Digital Water Atlas<sup>18</sup> was produced. Subsequent studies on the water demand for cooling of thermal power plants expand on the results of Flörke et al.<sup>12</sup>, with the aim of generating comprehensive insights into a sector that plays a crucial role in the global water stress.

The main concern with estimating the water demand of the global thermal power plant fleet is the limited availability of data on the cooling technologies and the water source (seawater or freshwater) used for cooling<sup>8,12,16</sup>. In this research, we strive to overcome these limitations.

It is crucial to determine how the world's hunger for electricity can be met while also reducing the power sector's thirst for water. Behrens et al.<sup>1</sup> discussed the vulnerability of power generation to water scarcity and water temperature on the basin level and suggested adaptation strategies for the EU. However, the authors did not include the ongoing development to replace once-through cooling systems by cooling towers. In contrast to once-through cooling systems, cooling towers, even consuming large amounts of water, do not cause a temperature increase in downstream basins. In addition, unscheduled outages related to cooling water supply shortages at thermal power plants with cooling towers are minor and uncommon<sup>4</sup>. Maulbetsch and Stallings<sup>19</sup> discuss dry cooling, which results in an estimated cost reduction related to water conservation of \$0.81 to \$1.62 per m<sup>3</sup> of saved water, which is in magnitude comparable to tap water. However, along with high costs and material requirements for the cooling system set-up, dry cooling decreases the power plant efficiency. This leads to an increase in greenhouse gas emissions, which counteracts the targets imposed by the IPCC Special Report (SR1.5)<sup>20</sup>. Therefore, dry cooling has limited application and can be sustainably implemented only in cases of high thermal efficiency and low cooling needs, for instance, in combined cycle gas turbines. While discussing various approaches to mitigate the water demand of thermal power plants, it is crucial to consider the development of renewable energy as a solution to the problem of water scarcity.

According to Roehrkasten et al.<sup>5</sup>, both solar PV systems and wind turbines withdraw and consume over their entire lifecycle 2-15% and 0.1-14%, respectively, of the water that coal or nuclear power plants use to generate 1 MWh of electricity. In this regard, renewable energy represents a viable solution, coupling almost zero greenhouse gas emissions with very low to negligible water demand for power generation. Recent research has highlighted that a high share of renewable energy is technically feasible and economically viable and, with the support of policy changes, can be implemented globally in the future<sup>21-25</sup>. However, this reality is not certain to happen.

Following these insights, it is relevant and necessary to estimate the development of water demand in a world with increasing shares of renewable energy.

We determine the cooling technology of individual power plants and perform an analysis for the sea and freshwater demand of the global thermal power plant fleet. Our research is based on the GlobalData dataset<sup>26</sup>, of which we process and analyse 13,863 thermal power plants and units exceeding 50 MW with a total active capacity of 4,182 GW (95.8% of global thermal power plant capacity) worldwide. We then build a ‘Best Policies Scenario’ (BPS) on the LUT Energy System Transition modelling tool<sup>21</sup> to estimate the development of water demand for each level from the ‘base year’ of 2015 to 2050 in 5-year intervals<sup>21</sup>. The tool enables to determine a least-cost scenario of the global energy transition towards a 100% renewable energy-based system and is fully compatible with the sustainability target of the IPCC SR1.5. So far, there has been a number of publications indicating that there is no certainty that the above mentioned sustainability target will be met in the future<sup>27–29</sup>. By end of 2018 more than 180 peer-reviewed articles have been identified describing 100% renewables for 2050 or earlier, as summarised by Hansen et al.<sup>30</sup>. The intention of this research is to educate on the potential water savings if the large majority of thermal power plants are replaced by renewable energy technologies. To address this concern, in addition to the scenarios incorporated in this study, the IRENA’s Remap2030<sup>29</sup> scenario was considered. The scenario was applied for 24 countries presented in our database and the values of water withdrawal and water consumption were compared with the estimates based on the BPS for the year 2030 (see Supplementary Tables 1, 2 and Supplementary Figure 1). We present the results for freshwater only and aggregated water use to indicate the total amount of sea and freshwater use on global, regional and country levels. We present an impact analysis on global-local level for all major rivers in the world carried out in a high temporal and spatial resolution.

### Analytical approach

To evaluate actual water abstractions of thermal power plants for cooling purposes and to address the above-mentioned issues and objectives, we developed a four-step method that follows a bottom-up approach.

As the first step, we identify the location and cooling system type for each power plant using free and easily accessible satellite images (e.g., from Google Earth, Bing, Yandex.Maps or other high-resolution products). The methodology of this step is described and applied before<sup>10,11</sup>. For visual examples, see the Supplementary Figure 2. However, not for all power plants the cooling technology can be determined based on satellite images. To fill up these gaps, we developed a statistical method premised on historical data and technological trends (see “Dataset on thermal power plants” section of Methods). Next, we deploy the method of Geographic Information System (GIS) analysis to identify whether sea or freshwater is used for cooling of each power plant.

For the second step, we calculate the footprint for cooling (focusing on both freshwater withdrawal and consumption) of each power plant taking into account its actual net generation, fuel type, technology and cooling system in 2015.

The third step is to compute the total water footprint on different levels: global, regional, country and river level. We compare our results to the values reported by Flörke et al.<sup>12</sup> and the GWSP Digital Water Atlas<sup>18</sup> (see ‘Comparison with GWSP’ sheet in Supplementary Data 3 and Supplementary Figure 3). In addition, we compare our estimations of water consumption with the data reported by the EIA for 865 unique power plants located in the United States in 2015<sup>31</sup>, as well as with previous studies conducted by Diehl and Harris<sup>32</sup> (see Supplementary Table 3). The identification of the cooling system and water used for cooling was compared against individual plant data provided by the EIA for the case of the United States and against individual power plants located in other countries, for which information from the GlobalData database was available. Our method demonstrated to deliver correct results in 81% of the cases for the cooling system identification (see Supplementary Tables 4, 5 and Supplementary Note 1) and in 93% of cases for the determination of the water type (see Supplementary Table 6, 7 and Supplementary Note 2), respectively.

Lastly, assigning a specific ID to each of the power plants, the model allows to trace their specific decommission when reaching the end of their technical life as scheduled by the LUT model<sup>21,33</sup>. It also accounts for the changes in the operations of the power plants, which originate from the implementation of new renewable energy capacity and the adaptation of the energy system in each of the 145 modelled regions. We evaluate our model by comparing the results of the BPS with the outcomes of the scenario based on the lifetime of power plants<sup>1,33</sup>. In this research, the latter scenario is referred to as the ‘Lifetime Scenario’ (LTS). More details on the above-mentioned scenarios and the model construction are provided in the Methods.

### Current and projected global water abstractions

The current status and the development of water demand on the global and regional levels is shown in Figure 1. In the ‘base year’ 2015, total global water withdrawal (combined freshwater and seawater) for thermal electricity generation was 500 cubic kilometres (Fig. 1a), from which freshwater withdrawal constituted 290 cubic kilometres or 57.3%. Global water consumption was estimated at 25 cubic kilometres (Fig. 1b), of which freshwater consumption accounted for 18 cubic kilometres or 72%. Median values and min-max intervals of the current global water abstractions are presented in Table 1.

Table 1 | Global total water and freshwater-only consumption and withdrawal. Figures reported are median values and min-max intervals in 2015, in km<sup>3</sup>.

[SUGGESTED PLACE FOR TABLE 1]

The water consumption for power generation is not evenly distributed globally. In 2015, the top among countries in both freshwater-only and total water consumption were China, the United States, India and Russia (‘Water demand per country’ sheet in Supplementary Data 3 and Supplementary Figures 4, 5). In the same year, China accounted for 31.5% of the global freshwater consumption, consuming almost 6 cubic kilometres annually. The United States, having the largest freshwater withdrawals for thermal power generation in the world, extracted 102 cubic kilometres, which represents 35.7% of all freshwater withdrawals by the power sector globally.

In case the BPS is implemented, a rapid decline in both global water withdrawal and consumption can be of benefit during the period from 2015 to 2030, as consequence of the projected decommissioning of old power plants (Fig. 1a-b and 1d-e) and replacement by less water-demanding renewable energy technologies. In 2030, water withdrawal is projected to be reduced by 75.1% compared to 2015 levels. Global water consumption is further mitigated by 85.1% compared to 2015 levels. This tendency continues beyond 2030, further reducing water withdrawal and consumption.

During the analysed period, 1,797 GW of new gas power plant capacities are scheduled to commission globally, from which 1,365 GW are open cycle units and 432 GW are combined cycle units. For that reason, in 2050, water withdrawals are projected to remain large on the territory of the Northeast to the South of China, South Korea, Benelux countries, central regions of Russia and Iran. Similarly, water consumption of power generation facilities is estimated to remain high in East of China, US Mid-Atlantic, South Korea, Russian Urals region, Great Britain and Ireland. During the transition period from 2015 to 2050, the global water withdrawal is projected to decrease approximately by 95.1%, whereas the consumption is projected to decline by 97.7%.

[SUGGESTED PLACE FOR FIGURE 1] Figure 1 | Water withdrawal and water consumption by thermal power plants at the regional resolution. Based on the LUT Energy System Transition model and on the BPS. a-c, global water withdrawal from 2015 through 2030 and 2050. Total global water withdrawal decreases from  $4.99 \times 10^{11} \text{ m}^3$  in 2015 to  $1.24 \times 10^{11} \text{ m}^3$  in 2030 and  $2.45 \times 10^{10} \text{ m}^3$  in 2050, respectively. d-f, global water consumption from 2015 through 2030 and 2050. Total global water consumption decreases from  $2.47 \times 10^{10} \text{ m}^3$  in 2015 to  $3.69 \times 10^9 \text{ m}^3$  in 2030 and  $5.56 \times 10^8 \text{ m}^3$  in 2050, respectively.

### Power plants' local impact on river ecosystems

GIS analysis shows that 55.5% of the global thermal power plant capacity is located within 5 km from main global rivers and lakes, and is therefore assumed to be freshwater cooled. In addition, 11.1% of the global thermal power plant capacity has an unknown freshwater source. The global thermal power plant capacity located within 20 km from the ocean coastline is assumed to be seawater cooled, totalling 33.4% (see Methods section 'GIS analysis/water source for cooling identification' and Supplementary Figure 6).

Historically, rivers represent natural borders of neighbouring countries and regions. At the same time, many large rivers cross territories of multiple countries. Hence, while analysing water abstractions from local rivers, we paid special attention to the correct assignment of generation factors of power plants located at specific rivers and, at the same time, the membership to different regions or countries. This plant-specific data was then applied in calculations of water abstractions at global, regional and country levels.

The outcome of our river analysis highlights that the Ohio River, Yellow River and Mississippi River are the rivers faced with the largest water consumption. Moreover, the Yangtze, Mississippi and Tennessee rivers experience the highest water withdrawals from the energy sector. Globally, the Yangtze River experiences the largest water withdrawals of about 12 cubic kilometres (median value) annually (see also Supplementary Figure 7).

The World Wide Fund For Nature (WWF) has released a list of 10 global rivers being most at risk, which includes the Danube<sup>34</sup>. Therefore, the Danube river is a representative example for a transition analysis of rivers. The water footprint of 63 identified thermal power plants located within a 10 km buffer zone around the Danube River corridor (Fig. 2a) was analysed. These power plants were detected on the territory of Germany, Austria, Slovakia, Hungary, Serbia, Romania and Bulgaria. Together, a total capacity of 18.04 GW comprised of 2.54 GW of coal, 8.08 GW of gas, 1.61 GW of oil-fired, and 5.80 GW of nuclear power plants was identified.

Figures 2b-e illustrate the change in water use for the power production based on the BPS. In 2015, 6.19 cubic kilometres (median value) of water were withdrawn and 0.12 cubic kilometres (median value) were consumed for thermal electricity generation of which 66.5% is related to nuclear power production. In the same year, power plants located on the German territory had the highest water consumption from the Danube (more than 59 million cubic meters, representing 49% of the aggregated consumption). This high share can be explained by the fact that 97.7% of the analysed power plants located in Germany are equipped with cooling towers, which is the most water consuming cooling technology<sup>14</sup>. Power plants at the Danube with cooling towers add up to 6.73 GW (37.3%) of capacity. Opposed to that, power plants located in Bulgaria had the highest water withdrawal driven by coal and nuclear generation (more than 2.79 cubic kilometres, representing 45% of the total withdrawals).

During the first 10 years of the transition period (2015-2025), a strong decrease in water consumption of 73.9% is estimated for the Danube, based on the BPS. A total of 35 thermal power plants are scheduled for decommissioning during this period. The projected decline in water consumption is down to 6.9% in 2040 compared to the 2015 baseline. The water withdrawal does not show the same rapid declining trend. In 2025, cooling still requires 72.9% of the initial water withdrawal, whereas in 2040, 16.0% of the water withdrawal from the 2015 is still required. This could be explained by the fact that 49% of the overall capacity consists of power plants with once-through cooling systems, which need a comparably high amount of withdrawn water for cooling<sup>14</sup>.

The simulation projects no water abstraction from the Danube associated with thermal electricity generation by 2050. The corresponding savings in water could be redistributed for other purposes, e.g. agricultural irrigation. The 'Water consumption per river' and 'Water withdrawal per river' sheets in Supplementary Data 3 present the results for 354 rivers globally.

[SUGGESTED PLACE FOR FIGURE 2] Figure 2 | Transition scenario for the Danube river. Based on the BPS. a, Thermal power plants located within 10 km from the Danube river and with power capacity of at least 50 MW. b-c, annual changes in freshwater consumption (median values and min-max intervals): aggregated values (b) and by fuel type used in power production (c). d-e, annual changes in freshwater withdrawal (median values and min-max intervals): aggregated values (d) and by fuel type (e). Figure 2c highlights a decline in water consumption by nuclear power plants in 2020-2025. This can be explained by the fact that 44.4% of the

active nuclear power capacity located at the Danube is scheduled for decommissioning during this period as 'very old' assets. These capacities are currently cooled by cooling towers, thus, there is a sudden drop in water consumption during 2020-2025. In contrast, water withdrawals do not follow the same trend (Figure 2e). The water withdrawals are mostly caused by once-through cooled nuclear power plants (3,226 MW) which are scheduled to be gradually decommissioned by 2050.

### **An optimal path towards water and energy sustainability**

While choosing a sustainable energy transition scenario for a country or a region, the focus of policy makers should be on both, compatibility to the IPCC SR1.5 and ensuring better mitigation strategies for energy-based water use. To address this call from the perspective of water conservation and to perform the analytical comparison between the LTS and the BPS, we deployed a metric of cumulative difference.

The cumulative difference constitutes the estimated amount of freshwater consumption and withdrawal that could be excluded from thermal power production globally in case the BPS will be put into practice instead of the implementation of the LTS. It is calculated as the disparity between the estimated global freshwater consumption and withdrawal in the LTS, and its projected counterpart in the BPS, for the same time period. The outcome of the analysis is presented in Figure 3 for the transition period 2015-2050 at 5-year intervals.

In 2020, the cumulative difference is estimated at 22.7 cubic kilometres less global freshwater withdrawal in case the LTS is pursued. Beyond 2020 the estimated cumulative difference is reversed: between 2020 and 2050, the BPS allows to consistently save up to 43.5 cubic kilometres of freshwater withdrawn and up to 6.5 cubic kilometres of freshwater consumed during each of the 5-year periods. Figure 3c and 3f illustrate a 35-year perspective, showing cumulative savings of 168.5 cubic kilometres of freshwater withdrawn and 29.4 cubic kilometres consumed compared to the LTS from 2015 to 2050. This amount of freshwater 'saved' from consumption is pivotal, since this water would not return to the local water system if it evaporates.

[SUGGESTED PLACE FOR FIGURE 3] Figure 3 | Analytical comparison between LTS and BPS. a, d, Development of global freshwater withdrawal and consumption in 2015-2050 by fuel type in the LTS. b, e, Development of global freshwater withdrawal and consumption in 2015-2050 by fuel type in the BPS. c, Cumulative difference in freshwater withdrawal, and f, cumulative difference in freshwater consumption, in cubic meters. The numbers in the figure show the difference in water demand savings of the given time compared to the previous time interval.

## Discussion

In our research we addressed the aspect of the water-energy nexus, which is related to the depletion of water resources due to operation of thermal power plants. By implementing the BPS, we show that the water consumption of the global power plant fleet can be decreased by 97.7%, and water withdrawal by 95.1% by the year 2050. The BPS was contrasted against the LTS and an advantage of the BPS was highlighted. The water that is freed in the BPS could be used by aquatic ecosystems or allocated to other purposes, for instance food production. Thus, the results of our research can potentially help in further studies on global food security to achieve a sustainable water-energy-food nexus<sup>35</sup>.

The selected BPS represents a least-cost energy system transition pathway and matches the targets of the IPCC SR1.5. In addition, it is in line with leading research on energy transition pathways towards a very high level of sustainability<sup>22,24,36,37</sup>. The results of this research are premised on a compiled power plant database that contains the location of thermal power plants with high accuracy. Coupled with high resolution maps, this contributes to the precision of the applied estimates of water use for cooling purposes. Using this data, we detected the rivers most affected by the water footprint of thermal power plants worldwide and highlighted for all rivers how the water stress can be reduced under the BPS until 2050.

The results of our research deviate from the water withdrawal values that were reported by Flörke et al.<sup>12</sup> and presented in the GWSP Digital Water Atlas<sup>18</sup>. The deviations from the GWSP data can be explained by the consideration of seawater and freshwater use in this research, as well as the allocation of cooling technologies for individual power plants. Our results could be potentially compared with the upcoming Water Resources Institute (WRI) global water withdrawals and consumption research, where there is a separation of seawater and freshwater demand and detailed analysis of power plant cooling technologies<sup>10</sup>.

In conclusion, we provide an extensive analysis of the water use of power plants that supports global and regional policy making, hence contributing to accomplish water security on a global-local level, which addresses the UN Sustainable Development Goal no. 6 'Ensure access to water and sanitation for all'<sup>38</sup>. Taking the BPS as an example of a possible pathway for the global energy sector, we show that the depletion of water resources caused by the water-energy nexus can be mitigated by transitioning to an electricity supply based on renewable energy.

## Methods

**Dataset on thermal power plants.** The main source of the power plant data of this study is the GlobalData dataset<sup>26</sup>. Taking this as a starting point, the data was cross-referenced, and curated with the information gathered from other datasets<sup>39-42</sup> by Farfan and Breyer<sup>33</sup> according to the SeaDataNet QC Manual<sup>43</sup>. However, the analysis by Farfan and Breyer<sup>33</sup> did not yet include the spatially highly resolved locations of the power plants which has been part of this study.

The data on power plants was then filtered to contain only thermal electricity generation, defined for this study as nuclear and fossil-fuelled (coal, gas and oil) power plants. This subset was further filtered by capacity to include only active power plant units exceeding 50 MW. The choice of this low boundary of capacity can be explained by the fact that power plant units of lower capacity include micro-generation and cannot be identified using aerial imagery, which is the main method of identification of power plants' location in our research. For this setup 13,863 units with a total active capacity of 4,182 GW are present globally for further analysis, which represents 66.3% of the total global power plant capacity, and 95.8% of the global thermal capacities in 2015. See Supplementary Note 3 for more information regarding technologies which were left out of the scope of the study.

We manually determined the exact location and cooling system type using aerial imagery through Google Earth, Bing and Yandex.Maps, following the instructions given by the U.S. Geological Survey<sup>11</sup>. We considered five types of cooling systems: wet cooling towers (which include natural-draft towers and mechanical-draft towers), dry cooling systems (known also as air cooled condensers), inlet cooling systems of gas power plants and so-called surface-water cooling systems, which have two sub-categories: once-through cooling systems and recirculating cooling pond systems. More information concerning the applied approach of using satellite imagery for cooling systems identification, is given in Supplementary Note 4.

To fill in the gaps for the cooling technology, several steps were performed. First, for each type of fuel (nuclear, coal, gas and oil) and specific countries we have identified the historically most common combination of generator type and cooling technology using simple statistical analysis. If this combination could not be determined for a specific power plant, it had been assigned the most common cooling technology of power generators for the given country.

For countries with missing values of the cooling technology, a sensitivity analysis was performed to analyse the effect of the assignment of different combinations of generator type and cooling technology on the water demand (see Supplementary Note 5, Supplementary Table 8 and Supplementary Figure 8). The sensitivity values on country level together with the probabilities of these values are presented in 'Sensitivity of country cons.' and 'Sensitivity of country withd.' sheets in Supplementary Data 3 for both, consumption and withdrawal.

The results of the identification of the cooling technology were compared against data for individual power plants presented in the GlobalData dataset (see Supplementary Table 4). In addition, we compare our results with information reported by the EIA for the United States<sup>44</sup>. As depicted in Supplementary Table 5 and Supplementary Data 2, our method of cooling system identification demonstrated to deliver correct results in 81% of the cases.

### Analysis of water footprint of power plants.

In this research we deploy a bottom-up approach. We calculate the water footprint of each power plant separately for water consumption and water withdrawal using Equation (1):

$$\text{Water footprint of thermal power generation} = \text{Active Capacity} \times \text{Full Load Hours} \times \text{Water Use Intensity} \quad (1)$$

where Active Capacity of installed power plants is given in MW, Water Use Intensity (WUI) in  $\text{m}^3 \text{MW}^{-1} \text{h}^{-1}$  and Full Load Hours of power generation in hours.

The difference between the calculation of the water footprint for water consumption and water withdrawal is in the WUI in Equation (1). The values for the WUI were derived based on empirical records of water use by power plants and reported by Macknick et al.<sup>14</sup>. Supplementary Table 9 contains the values of WUI that were applied for this research. Some scholars<sup>32,45</sup> raised the problem that the water consumption factors of once-through cooling systems are underestimated since forced evaporation downstream of the discharge point was excluded. Forced evaporation depends on various factors (site-specific average natural water temperature, average wind speed, and water-surface area over which heat is dissipated<sup>11</sup>). Consequently, it has to be calculated for every specific case, which was out of scope of our research. In addition, the WUI values reported by Macknick et al. currently are widely applied by respected institutions and research<sup>8,10</sup>. In this stage, we group oil and gas-fired power plants into one category since there is no oil plant data available. The same method was used in previous research papers<sup>10,46</sup>. However, we acknowledge the higher water dependency of oil power plants in comparison to gas plants.

The first two values in Equation (1) (Active Capacity  $\times$  Full Load Hours) characterize the actual net generation of the given power plant. Full load hours for the year 2015 were obtained from IEA Statistics<sup>47</sup> and were also used by Bogdanov et al.<sup>21</sup> and assigned to each power plant according to the fuel type and location (region in the global LUT model, country) presented in the database. Differentiating the full load hours based on the location and fuel type adds to the accuracy of the study, when full load hours of individual power plants are not accessible. However, due to the lack of information concerning actual generation data of individual power plants, the average values were used in the calculations. One differentiation not considered in this study is the potentially different average operating hours for the categories of gas steam and combined cycle (CCGT), which in the present study are considered as equal. As shown in Supplementary Table 9, the withdrawal and consumption coefficients are significantly higher for gas steam than for CCGT. However, due to unavailability of accurate data at a global level, we acknowledge this as a limitation in the present study. A large variation of the actual values of full load hours of power plants of a given fuel, in a given region, might impact the correctness of the water demand estimations. Using the openly available data provided by the EIA for the United States, we calculated the coefficient of variation of annual Hours in Service for thermal power plants<sup>31,44</sup> (see Supplementary Table 10). The results highlight that the average coefficient of variation of the annual Hours in Service of coal and nuclear power plants is low (4%). Thus, the use of average full load hours for coal and nuclear power plants will not significantly affect the correctness of water demand estimations. In the case of gas and oil power plants, the average coefficient of variation is higher – about 19%. Therefore, the use of average full load hours for gas and oil power plants might impact the accuracy of the results on the plant-level. However, this plant-to-plant difference in Hours of Service might not significantly affect the country-level estimates of water use since the value reported by the EIA<sup>48</sup>

for the total net electricity generation of thermal power plants in 2015 was only 1.3% higher than the corresponding value provided by the LUT model. Using the same dataset provided by the EIA, we calculated the average Hours in Service of power plants utilizing the same cooling technology. As depicted in Supplementary Table 11, the difference in Hours in Service of once-through cooling systems and cooling towers is, on average 2.2%, thus considered small. Therefore, based on the results presented in Supplementary Tables 10 and 11, the use of the same value of full load hours for all types of cooling of a given type of power plant, in a given region, is appropriate.

At subsequent stages, we calculated the total water footprint and the freshwater footprint with different scopes: on global level, for the 145 regions of the LUT model, for 148 countries and for major rivers. Results were obtained for the LTS and BPS scenarios for the period 2015-2050. See 'Water demand per region' sheet in Supplementary Data 3 for more information on water demand development for each region, based on the BPS.

**GIS analysis and water source for cooling identification.** To link thermal power plants with water bodies, we deploy the method of GIS analysis on the basis of the Global Self-consistent, Hierarchical, High-resolution Geography Database (GSHHG)<sup>49</sup> as a source of a high-resolution geography dataset, including global coastlines, lakes, rivers and political borders.

The literature review shows that there is a wide range of assumptions concerning seawater use for cooling purposes of power plants. These assumptions are based on the relative position of the given power unit and its distance to the closest coastline, starting from 5 km and up to 100 km<sup>15,50</sup>. There are reported cases of water transports up to a distance of 70 km in Phoenix, Arizona<sup>51</sup>. These distances may vary for different locations depending on different factors (as it was discussed by Behrens *et al.*<sup>1</sup>). Thus, we assumed that all thermal power plants located within 20 km from a coastline use seawater for cooling purposes as it was recommended in a study by Greenpeace<sup>13</sup>.

The results of the GIS analysis on seawater cooling highlight the strong alignment of the derived results of this research with the reported data on seawater cooling in the MENA region with a deviation of less than 5%<sup>17</sup>. Afterwards, we also took into account reported numbers stating that 50% of coal power plants in China and 85% in India, which are located within 20 km of the coastline, use seawater for their cooling<sup>13</sup>. The analysis revealed for India that 85% of the power plants are located within 7.88 km from the coastline. Thus, we labelled all thermal power plants in India which are located within a distance of 7.88 km from the coastline as seawater-cooled. In case of China, 50% of all thermal power plants that are located within 20 km from the coastline, are even within 0.49 km. Therefore, all thermal power plants in China located within 0.49 km distance from the coastline were assigned to be seawater-cooled. All other thermal power plants were assumed to use freshwater for cooling purposes. This analysis was conducted only for India and China because of the lack of similar information concerning other countries.

The applied assumption of 20 km might lead to an underestimation of the freshwater use in the world<sup>13</sup>. To assess the deviation of the freshwater demand resulting from the choice of the seawater cooling buffer zone, we performed a sensitivity analysis (see Supplementary Table 12). The results of the analysis show that a reducing of the 'sea cooling range' from 20 km to 4 km, results in a smooth increase of global freshwater consumption and withdrawal. For instance, if the 'sea cooling range' is reduced to 12 km, the difference in freshwater consumption and withdrawal is below 2% compared to the 20 km assumption. Assuming a 'sea cooling range' of 2 km, a difference of 12.3% for freshwater consumption and 8.6% for freshwater withdrawal is estimated, compared to the assumed 20 km for this study. The difference can be explained by the fact that thermal power plants tend to be located closer to the coastline (see Supplementary Figure 9 and 10).

The power plants were assumed to have a direct freshwater source for cooling if they are located within 5 km from rivers and lakes. We used the GSHHG database for the GIS analysis since it provides the location of about 25,960 rivers worldwide in high resolution. Facilities with an intake or discharge of cooling water to a smaller stream, or those that use groundwater, cannot be matched using GIS analysis. In our research, it was not possible to determine the exact source of water of 9.9% of the total active capacity presented in our filtered database with certainty. Further information provided by electricity generation companies proved that those power plants use ground water for their cooling purposes (example in ref.<sup>52</sup>) so these results had been added to freshwater consumption and water withdrawal numbers.

In more than half of the reported cases concerning cooling technology presented in the GlobalData dataset, the type of water used for cooling purposes is specified (seawater, water from rivers or lakes). We used the reported data for individual power plants to compare our results for the identification of the water type (see Supplementary Table 6). Moreover, we used data provided by the EIA for the United States<sup>44</sup> to compare our results for the identification of the water type. As depicted in Supplementary Table 7 and Supplementary Data 2, the proposed method has shown a high accuracy for the determination of the water type (93% of cases demonstrate a correctly identified water type) which clearly indicates that it can be used for regional and global studies. However, we acknowledge that to obtain a higher accuracy for the results on plant level, it is necessary to consider data directly reported by power generation companies for each specific power plant unit.

**Transition scenarios.** We performed our analysis of the water footprint development in 5-year time steps in full hourly resolution, focusing on the transition period for the years from 2015 to 2050. Two scenarios are considered: LTS and BPS.

The main idea of the LTS is that the stock of thermal power plants was assumed to operate until the point of decommissioning. We follow the reasoning of Farfan and Breyer<sup>33</sup> who calculated the expected year of decommissioning as the reported year of commissioning of a power plant plus the average technical lifetime of the power plant by fuel type. Thus, we assume that the average technical lifetime for gas and oil-fired power plants is 34 years, for coal-fired and nuclear power plants 40 years<sup>53</sup>. However, the database used contains power plants that were active in 2015 that should have been decommissioned before this year (these plants were highlighted as 'very old'). In addition, those power plants in the database for which the commissioning year is unknown were marked as power plants with 'unknown year'. The 'unknown year' category represents 123.92 GW or 3.0% of the total thermal capacity. The 'very old' power plants that are still operating represent 748.87 GW or 17.9% of the thermal power plant capacity. We assumed that the above mentioned two categories of power plants are gradually decommissioned between 2015 and 2025, 10% of their initial capacity per year. The BPS was constructed on the basis of the LUT Energy System Transition model<sup>21</sup>. According to this model, the operation of the power sector is cost-optimised and full load hours of coal, gas and oil-fired power plants are a part of the optimisation and can decrease or cease during the transition period, as shown in the data presented by Bogdanov *et al.*<sup>21</sup>. Opposed to that, the specific utilization of nuclear power plants does not allow the change of the baseload in time due to security issues, so the continuous utilisation of the existing capacity till the end of its technical lifetime was assumed (except for Germany, where partly an earlier decommissioning is forced by law). Hence, the outcome of the applied scenario is a time series of full load hours of power generation facilities for each of the 145 regions. The model tolerates the role of gas power plants during the transition period due to lower GHG emissions and, in particular, the possibility to substitute the currently used natural gas by biomethane or power-to-gas in these plants at later time periods. Thereby, according to the outcomes of the applied scenario, 1,797 GW of gas-fired capacities will be installed globally from 2015 to 2050, whereas 2,077 GW are still active in 2050 used by a global average of 483 full load hours. We determined and assigned to the new capacities the most common gas generator type during the last 15 years for each of the 145 regions. The cooling technology was assigned as indicated in the section 'Dataset on thermal power plants'. The changes in the water footprint of new commissioned plants as well as of the existing operating gas power plants were calculated the same way as for coal and oil-fired power plants using the full load hours generated by the LUT Energy System Transition model. We followed the logic of the power plants decommissioning process described in the LTS.

Supplementary Note 6 contains the equations underlying the calculation of water demand of power plants in the LTS and BPS.

**Analysis of water footprint of power plants on global rivers.** For the river analysis we required a river database that also contained names of rivers. Commonly, the rivers are given a certain ID-number rather than their respective names, thus we chose to use the river database from Natural Earth<sup>54</sup>.

Initially, the database contained 1,454 rivers and river sections. For rivers with missing or misspelled names, these were investigated and corrected manually. Separate sections of rivers that belong together were merged. Using GIS analysis, we identified rivers that have power plants located within 5 km from the river's corridor. As a result, we obtained 354 unique rivers for further analysis.

We calculated water consumption and water withdrawal of power plants separately for each of these 354 rivers, as well as the projected values for the period 2015-2050 with 5-years intervals using the baseline of the BPS. To make the results of this work useful to local policy makers, we assigned to each of the given rivers the corresponding continent and ocean of discharge and the country with the highest impact on its flow.

**Data availability.** The data that supports the findings of this study is available from GlobalData<sup>26</sup> but restrictions apply to the availability, which was used under license for this study. The database encompasses over 170 fields of information, including the names of power generators, owners, operators, generator manufacturers, etc. An extract of the extensive list of thermal power plants exceeding 50 MW containing fuel type, country, active capacity, generation type, location and type of cooling technology is available as Supplementary Data 1. The data that support the findings of this study are available from the corresponding author upon reasonable request.

**Code availability.** Example Matlab scripts used in the production of this analysis are available at <https://github.com/WaterEnergyWork/FreshwaterDemand.git>

**Competing Interests.** The authors declare no competing interests.

**Acknowledgements.** The authors would like to thank Dr. M. Flörke for helpful discussions concerning earlier versions of the manuscript.

**Author contributions.** A.L. designed the study and performed the analysis, collected data on cooling technology and water use, drafted the manuscript. J.F. collected the data on existing power plants globally, and assisted with the methodology development and the results analysis. U.C. assisted with the methodology development and literature review. C.L. assisted with the sensitivity analysis and gave support for paper writing. C.B. assisted with the analysis, supervised and coordinated the work.

## References

- Behrens, P., van Vliet, M. T. H., Nanninga, T., Walsh, B. & Rodrigues, J. F. D. Climate change and the vulnerability of electricity generation to water stress in the European Union. *Nat. Energy* **2**, 17114 (2017).
- Ganguli, P., Kumar, D. & Ganguly, A. R. US Power Production at Risk from Water Stress in a Changing Climate. *Sci. Rep.* **7**, (2017).
- IEA (International Energy Agency). Water Energy Nexus- Excerpt from the World Energy Outlook 2016. *Int. Energy Agency* **60** (2016). doi:10.1021/es903811p
- van Vliet, M. T. H. *et al.* Vulnerability of US and European electricity supply to climate change. *Nat. Clim. Chang.* **2**, 676–681 (2012).
- Roehrkasten, S., Schaeuble, D. & Helgenberger, S. Secure and sustainable power generation in a water-constrained world. Policy Paper on the occasion of the South African International Renewable Energy Conference (SAIREC). Institute for Advanced Sustainability Studies (IASS), 2015.
- McDermott, G. & Nilsen, O. Electricity prices, river temperatures, and cooling water scarcity. *Land Econ.* **90**, 131–148 (2014).
- Boogert, A. & Dupont, D. The nature of supply side effects on electricity prices: The impact of water temperature. *Econ. Lett.* **88**, 121–125 (2005).
- Spang, E. S., Moomaw, W. R., Gallagher, K. S., Kirshen, P. H. & Marks, D. H. The water consumption of energy production: An international comparison. *Environ. Res. Lett.* **9**, (2014).
- Kenny, J. F. *et al.* *Estimated Use of Water in the United States in 2005 Circular 1344*. Water (2009). doi:http://dx.doi.org/10.3133/cir1405
- Luo, T., Krishnaswami, A. & Li, X. *A methodology to estimate water demand for thermal power plants in data-scarce regions using satellite images*. World Research Institute Technical note. (2018). Available at: <https://www.wri.org/publication/methodology-estimate-water-demand-thermal-power-plants-data-scarce-regions>.
- Diehl, T. H., Harris, M. A., Murphy, J. C., Hutson, S. S. & Ladd, D. E. *Methods for Estimating Water Consumption for Thermoelectric Power Plants in the United States*. (2013). doi:http://dx.doi.org/10.3133/sir20135188.
- Flörke, M. *et al.* Domestic and industrial water uses of the past 60 years as a mirror of socio-economic development: A global simulation study. *Glob. Environ. Chang.* **23**, 144–156 (2013).
- Biesheuvel, A., Cheng, I. & Liu, X. *Modelling global water demand for coal based power generation*. Greenpeace. (2016).
- Macknick, J., Newmark, R., Heath, G. & Hallett, K. C. Operational water consumption and withdrawal factors for electricity generating technologies: A review of existing literature. *Environ. Res. Lett.* **7**, (2012).
- van Vliet, M. T. H., Wiberg, D., Leduc, S. & Riahi, K. Power-generation system vulnerability and adaptation to changes in climate and water resources. *Nat. Clim. Chang.* **6**, 375–380 (2016).
- Vassolo, S. & Döll, P. Global-scale gridded estimates of thermoelectric power and manufacturing water use. *Water Resour. Res.* **41**, 1–11 (2005).
- Siddiqi, A. & Anadon, L. D. The water-energy nexus in Middle East and North Africa. *Energy Policy* **39**, 4529–4540 (2011).
- Global Water System Project (GWSP) Digital Water Atlas. (2018). Available at: <http://atlas.gwsp.org/>.
- Maulbetsch, J. & Stallings, J. Evaluating the Economics of Alternative Cooling Technologies. *Power Eng.* **116**, 120–128 (2012).
- IPCC. *Global warming of 1.5°C. An IPCC Special Report on the impacts of global warming of 1.5°C above pre-industrial levels and related global greenhouse gas emission pathways, in the context of strengthening the global response to the threat of climate change.* (2018).
- Bogdanov, D. *et al.* Radical transformation pathway towards sustainable electricity via evolutionary steps. *Nat. Commun.* **10**, 1077 (2019).
- Jacobson, M. Z. *et al.* Matching demand with supply at low cost in 139 countries among 20 world regions with 100% intermittent wind, water, and sunlight (WWS) for all purposes. *Renewable Energy* **123**, 236–248 (2018).
- Creutzig, F. *et al.* The underestimated potential of solar energy to mitigate climate change. *Nat. Energy* **2**, 17140 (2017).
- Sgouridis, S., Csala, D. & Bardi, U. The sower's way: Quantifying the narrowing net-energy pathways to a global energy transition. *Environ. Res. Lett.* **11**, 094009 (2016).
- Teske, S. *Achieving the Paris Climate Agreement Goals*. (Springer International Publishing, 2019). doi:10.1007/978-3-030-05843-2
- GlobalData Ltd. GlobalData Power. *Database* (2014).
- IEA. Tracking Clean Energy Progress 2017. *Energy Technology Perspectives 2017* 1–82 (2017). doi:10.1787/energy\_tech-2014-en
- World Nuclear Association. World Nuclear Performance Report. *World Nucl. Assoc.* **1**, 32 (2016).
- IRENA. *Global Energy Transformation: A Roadmap to 2050* (2018). Available at: [https://www.irena.org/-/media/Files/IRENA/Agency/Publication/2019/Apr/IRENA\\_Global\\_Energy\\_Transformation\\_2019.pdf](https://www.irena.org/-/media/Files/IRENA/Agency/Publication/2019/Apr/IRENA_Global_Energy_Transformation_2019.pdf)
- Hansen, K., Breyer, C. & Lund, H. Status and perspectives on 100% renewable energy systems. *Energy* **175**, 471–480 (2019).
- EIA U.S. Energy Information Administration. Form EIA-923 detailed data with previous form data (EIA-906/920). (2015). Available at: <https://www.eia.gov/electricity/data/eia923/>. (Accessed: 29th June 2019)
- Diehl, T. H. & Harris, M. A. *Withdrawal and consumption of water by thermoelectric power plants in the United States, 2010*. (2014). doi:10.3133/sir20145184
- Farfan, J. & Breyer, C. Structural changes of global power generation capacity towards sustainability and the risk of stranded investments supported by a sustainability indicator. *Journal of Cleaner Production* **141**, 370–384 (2017).
- Wong, C., Williams, C., Pittock, J., Collier, U. & Schelle, P. *World's top 10 rivers at risk*. WWF (2007). Available at: <http://wwf.panda.org/?108620/Worlds-Top-10-Rivers-at-Risk>
- Biggs, E. M. *et al.* Sustainable development and the water-energy-food nexus: A perspective on livelihoods. *Environ. Sci. Policy* **54**, 389–397 (2015).
- Greenpeace, GWEC & SolarPower Europe. *Energy [R]evolution: A Sustainable World Energy Outlook 2015*. Greenpeace International (2015).
- Brown, T. W. *et al.* Response to 'Burden of proof: A comprehensive review of the feasibility of 100% renewable-electricity systems'. *Renew. Sustain. Energy Rev* **92**, 834–847 (2018).
- United Nations. Clean Water and Sanitation: Why It Matters. *Sustain. Dev. Goals Briefs* (2016). doi:10.1108/09513570510584647
- Platts. World Electric Power Plants Database. *S&P Global* (2016).
- IRENA. Renewable Energy Capacity Statistics 2015. *Irena* **75**, 44 (2015).
- Lehner, B. *et al.* High-resolution mapping of the world's reservoirs and dams for sustainable river-flow management. *Frontiers in Ecology and the Environment* **9**, 494–502 (2011).
- Gerlach, A., Werner, C., Gerlach, A., Breyer, C. & Orlandi, S. Latest Developments in Global Installed Photovoltaic Capacity and Hidden Growth Markets. Proceedings of the 31th European Photovoltaic Solar Energy Conference (2015). doi:10.4229/31stEUPVSEC2015-7DO.5.2
- SeaDataNet - Pan-European infrastructure for ocean and marine data management. *Int. J. Digit. Earth* **3** (2010).
- EIA U.S. Energy Information Administration. Form EIA-860 detailed data with previous form data (EIA-860A/860B). (2015). Available at: <https://www.eia.gov/electricity/data/eia860/>. (Accessed: 29th June 2019)
- Morton, V. & Ehrverri, D. P. Electric Power Plant Water Use in North Carolina: Forced Evaporation and Emission Controls. Thesis from Duke University. (2010).
- Feeley, T. J. *et al.* Water: A critical resource in the thermoelectric power industry. *Energy* **33**, 1–11 (2008).
- International Energy Agency. Statistics. Global energy data at your fingertips. (2018).
- EIA U.S. Energy Information Administration. Electric Power Monthly. (2017). Available at: [https://www.eia.gov/electricity/monthly/epm\\_table\\_grapher.php?t=epmt\\_1\\_01](https://www.eia.gov/electricity/monthly/epm_table_grapher.php?t=epmt_1_01). (Accessed: 29th June 2019)
- Wessel, P. & Smith, W. H. F. A global, self-consistent, hierarchical, high-resolution shoreline database. *J. Geophys. Res. Solid Earth* **101**, 8741–8743 (1996).
- Zhou, Y. & Tol, R. S. J. Evaluating the costs of desalination and water transport. *Water Resour. Res.* **41**, 1–10 (2005).
- World Nuclear Association. Cooling Power Plants. 14 (2015). Available at: <http://www.world-nuclear.org/information-library/current-and-future-generation/cooling-power-plants.aspx>. (Accessed: 1st November 2017)
- Groves, J., Krankkala, T. & Nigent, G. Afton Combined Cycle with Hybrid Cooling. *Power Engineering* (2010). Available at: <http://www.power-eng.com/articles/print/volume-114/issue-2/features/afton-combined-cycle.html>. (Accessed: 1st September 2017)
- Farfan, J. & Breyer, C. Aging of European power plant infrastructure as an opportunity to evolve towards sustainability. *Int. J. Hydrogen Energy* **42**, 18081–18091 (2017).
- Natural Earth. Rivers + lake centerlines. (2016). Available at: <https://www.naturalearthdata.com/downloads/50m-physical-vectors/50m-rivers-lake-centerlines/>



Table 1 | Global total water and freshwater-only consumption and withdrawal. Figures reported are median values and min-max intervals in 2015, in km<sup>3</sup>.

Value, km <sup>3</sup>	Consumption		Withdrawal	
	Sea- and freshwater	Freshwater	Sea- and freshwater	Freshwater
median	25	18	500	290
min	19	14	340	210
max	33	24	660	365.58

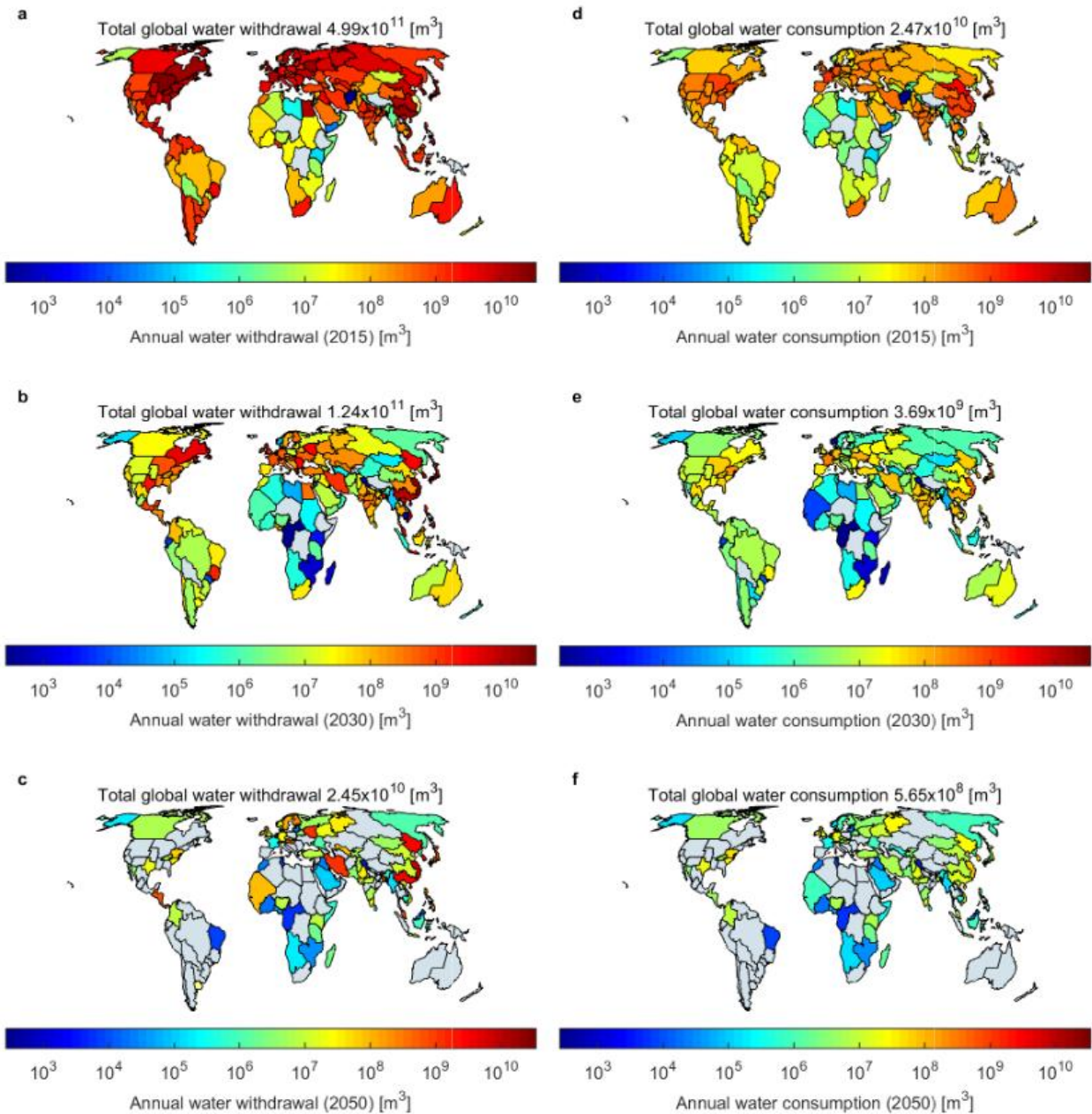


Figure 1 | Water withdrawal and water consumption by thermal power plants on the global level in the regional resolution of the LUT Energy System Transition model and based on the BPS. A-C, Global water withdrawal from 2015 through 2030 and 2050. D-F, Global water consumption from 2015 through 2030 and 2050.

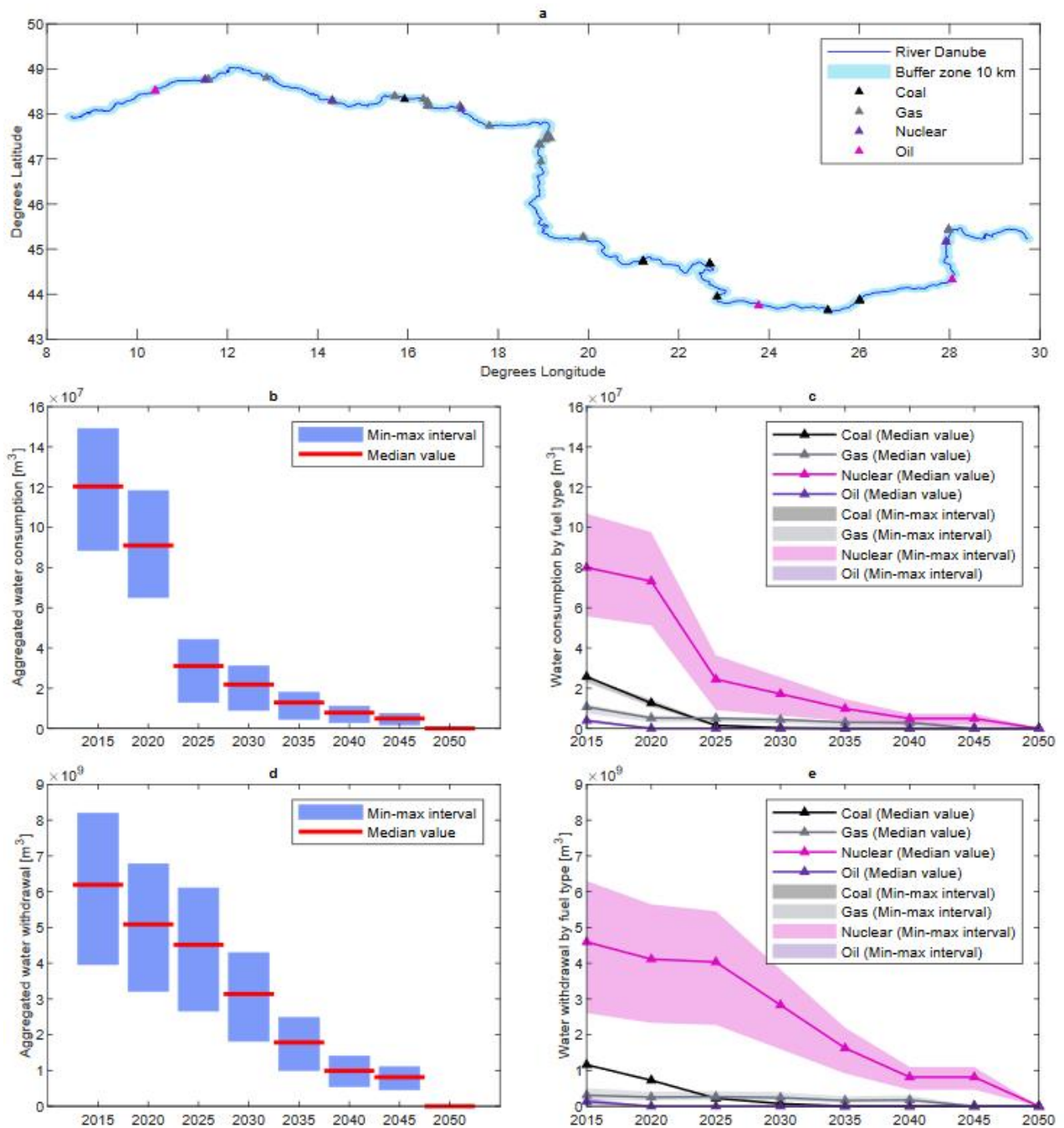


Figure 2 | Transition scenario for the Danube River (based on the BPS). A, Thermal power plants located within 10 km from the Danube river and with power capacity of at least 50 MW. B-C, annual changes in freshwater consumption (median values and min-max intervals): aggregated values (B) and by fuel type used in power production (C). D-E, annual changes in freshwater withdrawal (median values and min-max intervals): aggregated values (D) and by fuel type (E). The median values and min-max intervals were calculated using Water Use Intensity values by Macknick et al.<sup>15</sup> As it is described in Eq. (1), (4) and (5) in Methods, water demand of thermal power plants and its development depend on various factors. Figure 2C highlights a decline in water consumption by nuclear power plants in 2020-2025. This can be explained by the fact that 44.4% of the active nuclear power capacity located at the Danube is scheduled to be decommissioned during this period as 'very old' assets. These capacities are currently cooled by cooling towers, thus, there is a sudden drop in water consumption during 2020-2025. In contrast to the water consumption, water withdrawals do not follow the same trend (Figure 2E). The water withdrawals are mostly caused by once-through cooled nuclear power plants (3,226 MW) which are scheduled to be gradually decommissioned by 2050.

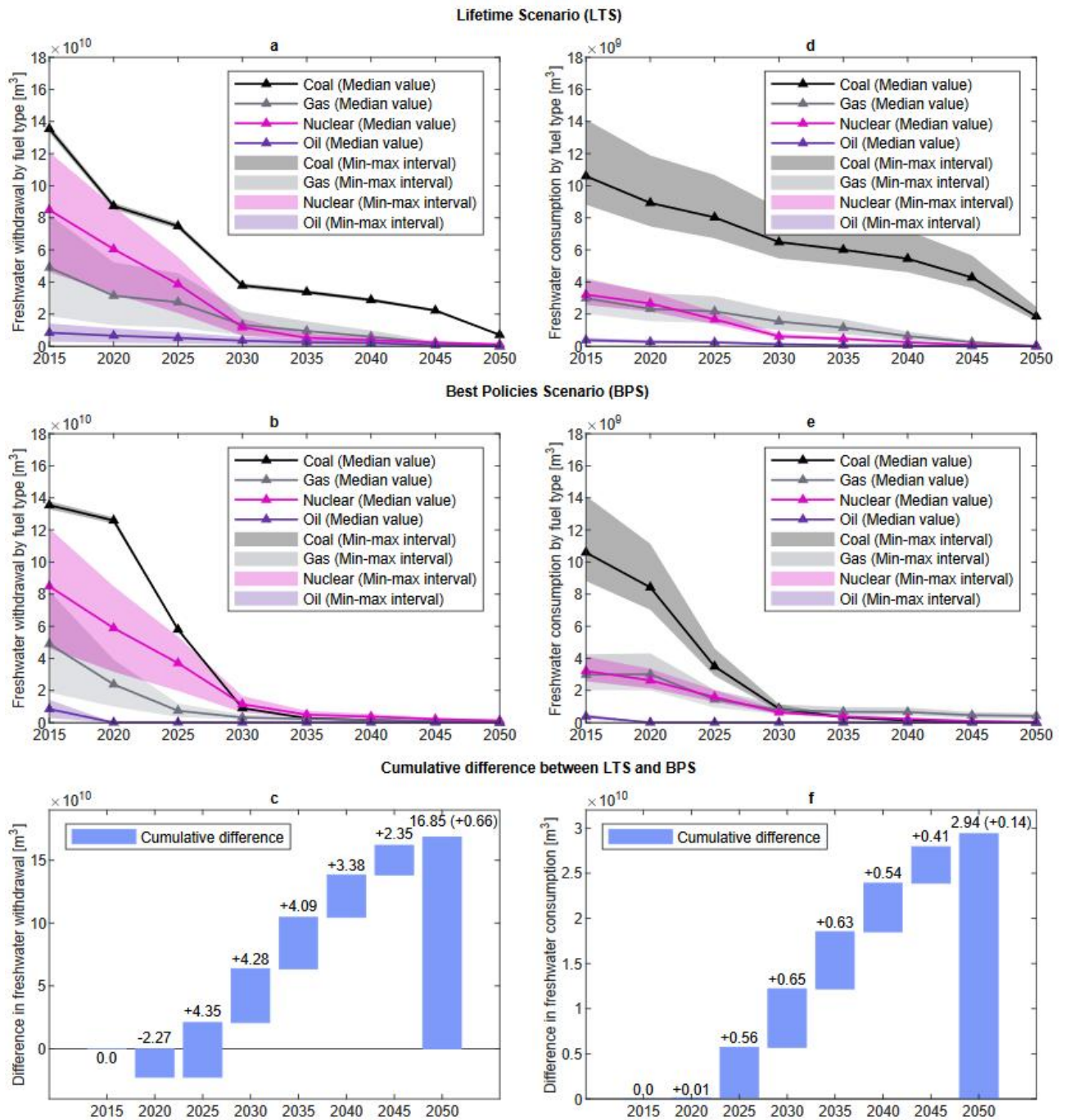


Figure 3 | Analytical comparison between LTS and BPS. A, D, Development of global freshwater withdrawal and consumption in 2015-2050 by fuel type in the LTS. B, E, Development of global freshwater withdrawal and consumption in 2015-2050 by fuel type in the BPS. C, Cumulative difference in freshwater withdrawal, and F, cumulative difference in freshwater consumption, in cubic meters. The numbers in the figure show the difference in water demand savings of the given time compared to the previous time interval.